

Annual Review of Psychology
Stress Management
Interventions to Facilitate
Psychological and Physiological
Adaptation and Optimal Health
Outcomes in Cancer Patients
and Survivors

Michael H. Antoni,^{1,2} Patricia I. Moreno,^{2,3}
and Frank J. Penedo^{1,2,4}

¹Department of Psychology, University of Miami, Coral Gables, Florida, USA;
email: mantoni@miami.edu

²Cancer Control Research Program, Sylvester Comprehensive Cancer Center, University of
Miami, Miami, Florida, USA

³Department of Public Health Sciences, University of Miami School of Medicine, Miami,
Florida, USA

⁴Department of Medicine, University of Miami School of Medicine, Miami, Florida, USA

ANNUAL
REVIEWS **CONNECT**

www.annualreviews.org

- Download figures
- Navigate cited references
- Keyword search
- Explore related articles
- Share via email or social media

Annu. Rev. Psychol. 2023. 74:423–55

First published as a Review in Advance on
August 12, 2022

The *Annual Review of Psychology* is online at
psych.annualreviews.org

<https://doi.org/10.1146/annurev-psych-030122-124119>

Copyright © 2023 by the author(s). This work is licensed under a Creative Commons Attribution 4.0 International License, which permits unrestricted use, distribution, and reproduction in any medium, provided the original author and source are credited. See credit lines of images or other third-party material in this article for license information.



Keywords

cancer-related stressors, psychological adaptation, physiological adaptation, cognitive behavioral therapy, stress management intervention, cancer health outcomes

Abstract

Cancer diagnosis and treatment constitute profoundly stressful experiences involving unique and common challenges that generate uncertainty, fear, and emotional distress. Individuals with cancer must cope with multiple stressors, from the point of diagnosis through surgical and adjuvant treatments and into survivorship, that require substantial psychological and physiological adaptation. This can take a toll on quality of life and well-being and may also promote cellular and molecular changes that can exacerbate physical symptoms and facilitate tumor growth and metastasis, thereby contributing to negative long-term health outcomes. Since modifying responses to

stressors might improve psychological and physiological adaptation, quality of life, and clinical health outcomes, several randomized controlled trials have tested interventions that aim to facilitate stress management. We review evidence for the effects of stress management interventions on psychological and physiological adaptation and health outcomes in cancer patients and survivors and summarize emerging research in the field to address unanswered questions.

Contents

STRESSORS AND CHALLENGES AMONG CANCER PATIENTS AND SURVIVORS		425
Psychological Adaptation: Cancer-Related Distress		426
Psychological Adaptation: Resilience		427
Physiological Adaptation		427
Psychological Stress and Neuroendocrine Regulation in Cancer		428
Psychological Stress and Neuroendocrine-Mediated Changes in Immune Activation and Regulation in Cancer		429
Psychological and Physiological Adaptation and Clinical Course of Cancer		430
IMPACT OF STRESS MANAGEMENT INTERVENTIONS ON PSYCHOLOGICAL ADAPTATION IN CANCER PATIENTS AND SURVIVORS		432
What Constitutes a Stress Management Intervention?		432
Cognitive Behavioral Therapy as a Stress Management Intervention to Facilitate Psychological Adaptation		432
Effects of Cognitive Behavioral Therapy Interventions on Psychological Adaptation in Cancer Patients and Survivors		433
Cognitive Behavioral Stress Management Effects on Psychological Adaptation in Cancer Patients and Survivors		433
IMPACT OF STRESS MANAGEMENT INTERVENTIONS ON PHYSIOLOGICAL ADAPTATION AND HEALTH OUTCOMES IN CANCER PATIENTS		434
Methodologic Considerations		434
Effects of Stress Management Interventions on Physiological Adaptation in Cancer Patients and Survivors		434
Effects of Stress Management Interventions on Physical Symptoms During and After Cancer Treatment		436
Effects of Psychological Intervention on Long-Term Clinical Outcomes in Cancer Survivors: Initial Studies		436
Meta-Analyses of Effects of Stress Management Interventions on Long-Term Survival in Cancer		437
Exemplars of Modern Trials That Demonstrate the Effects of Stress Management Interventions on Long-Term Clinical Health Outcomes in Breast Cancer Patients		438
EMERGING TOPICS IN STRESS MANAGEMENT RESEARCH IN CANCER		441

Role of Central Nervous System Processes in Research on Stress	
Management Interventions	441
Testing Pharmacologic Stress Management Interventions	441
Testing Effects of Stress Management Interventions on Long-Term	
Cancer-Associated Pathophysiologic Processes and Accelerated Aging	442
Extending the Reach of Research on Stress Management Interventions	
to Underserved Cancer Populations	443
The COVID-19 Pandemic as a Model of Contextual Stressors in the Lives	
of Cancer Patients and Survivors	444
Methodologic Challenges Going Forward	444
CONCLUSION	445

STRESSORS AND CHALLENGES AMONG CANCER PATIENTS AND SURVIVORS

Receiving a cancer diagnosis is a profoundly stressful experience involving unique and common challenges that often introduces uncertainty, fear, and emotional distress (Singer 2018, Stanton 2006). Patients are tasked with understanding new information and making important and often complex treatment decisions. These treatment decisions occur while experiencing significant disruptions to patients' daily lives and the social/occupational roles that often define their identity (Hench & Danielson 2009). A diagnosis of cancer also frequently brings salient awareness of one's own mortality and vulnerability and a degree of uncertainty that can further exacerbate negative emotional reactions (Lee & Loiselle 2012). Most cancers require intervention; however, the specific therapy or therapies and duration of treatment can vary greatly across cancer types and stages (Am. Cancer Soc. 2020a). Common targeted cancer treatments that remove or destroy malignant tissue include surgery to excise a tumor and radiation to ablate DNA in cancer cells. Common systemic therapies (i.e., treatments that target cancer cells throughout the entire body) include chemotherapy to kill rapidly growing and dividing cancer cells, hormone therapy to modify hormones like estrogen or androgens that fuel growth in specific types of cancer cells, and immunotherapy to enable a person's own immune system to identify and attack cancer cells. Collectively, these treatments can create short- and long-term side effects and toxicities that persist well beyond treatment.

Cancer treatments can be classified into different categories based on the goal or intention of the treatment.¹ Primary treatment refers to the first or main treatment used to eliminate or reduce traceable cancer. Adjuvant therapy is additional treatment given after primary treatment to eliminate any remaining cancer cells using either systemic or nonsystemic therapies. Neoadjuvant therapy is treatment that occurs prior to initial treatment (most typically surgery) to facilitate the primary treatment or make it more effective. Palliative treatment or treatment with palliative intent is the use of any therapy with the goal of improving quality of life (QoL; i.e., social, functional, emotional, physical functioning) and reducing the physical burden of cancer by relieving treatment side effects or symptoms related to the cancer itself. Palliative treatment can be applied to patients with any stage of cancer experiencing symptom burden; however, it is often the focal

QoL: quality of life

¹Readers may consult the National Cancer Institute's *Dictionary of Cancer Terms* at <https://www.cancer.gov/publications/dictionaries/cancer-terms/>.

treatment for those with metastatic cancer that has spread to other parts of the body from where it originated.

An individual's response to treatment with respect to both its effectiveness and its side effects is highly variable. Symptomatic side effects or toxicities, such as pain, nausea, fatigue, and neuropathy, can significantly reduce the tolerability of cancer treatments (a patient's capacity to adhere to therapy) and therefore have a negative impact on QoL and psychosocial adjustment (Basch et al. 2009, Pearman et al. 2018). Cancer treatment and related disability also have a negative impact on an individual's finances as a result of the direct and indirect costs of treatment. This economic challenge, known as financial toxicity, is highly prevalent among individuals with cancer (Carrera et al. 2018, Lentz et al. 2019) and further compromises QoL. Patients who are more recently diagnosed and those who receive adjuvant therapies are more likely to experience financial toxicity (Chino et al. 2017). Similar to other toxicities, financial toxicity reduces the tolerability of cancer treatments and has a deleterious impact on QoL and psychosocial adaptation (Carrera et al. 2018, Lentz et al. 2019). It can also result in material consequences like reduced income, increased debt, depletion of savings, and bankruptcy (Lentz et al. 2019).

Advances in cancer prevention, screening, and treatment have led to a significant increase in the number of individuals who live beyond a cancer diagnosis and the completion of curative-intent treatment (Miller et al. 2019). Although many individuals recover from the decrements in QoL that they experience during cancer treatment after treatment completion, these effects may persist long-term in some individuals or emerge for the first time months or even years later (known as late effects; Am. Soc. Clin. Oncol. 2019). The most common symptoms individuals experience are pain, fatigue, and impairments in physical functioning; however, sexual and urinary/bowel dysfunction, cognitive impairment, and sleep disturbance are also frequently reported (Kent et al. 2015, Stanton et al. 2015, Stein et al. 2008). Receiving cancer treatment can also increase the risk for subsequent cancers (known as second primary cancers), and toxicities can adversely impact the cardiovascular and reproductive systems (Demoor-Goldschmidt & de Vathaire 2019, Ganz 2001). As a result, individuals previously treated for cancer often undergo long-term surveillance by both specialists and primary care providers in order to mitigate these risks (Wilbur 2015).

In contrast to treatment with curative intent, treatment for incurable advanced or metastatic cancer is often not circumscribed to a definitive period and does not include a post-treatment completion phase as with curative-intent treatment (Am. Cancer Soc. 2020b). Furthermore, treatment plans and their intent (e.g., palliation versus life-prolonging) must be tailored to an individual's treatment response. Due to the nature of the advanced disease, these patients experience a high degree of uncertainty and anxiety tied to multiple repeated diagnostic procedures as care teams must continuously evaluate how their cancer is responding to treatment and whether their treatment plan needs to be changed (Bauml et al. 2016, Dunn et al. 2017). Accordingly, patients may experience significant treatment-related burnout and cumulative effects of cancer treatment on symptomatic side effects and toxicities, which underlines the importance of patient-centered care and ongoing discussion with care providers regarding the goals of care and the possible benefits and side effects of cancer treatments (Langbaum & Smith 2019).

Psychological Adaptation: Cancer-Related Distress

Given the stressors and challenges associated with diagnosis and treatment, it is not surprising that cancer can take a significant toll on emotional well-being and require sustained psychological adaptation. Anxiety and depressed mood are two of the most common emotional reactions among individuals who are undergoing cancer treatment (Jacobsen & Andrykowski 2015) or have completed treatment (Stanton et al. 2015). About 30–40% of individuals with cancer meet diagnostic criteria for anxiety and other mood disorders (Mitchell et al. 2011); however,

subclinical elevations in symptoms and other forms of cancer-related distress still negatively impact QoL and should be addressed. As expected, disease severity, premorbid psychological functioning, access to care, and functional limitations typically exacerbate negative emotional reactions and compromise psychosocial adjustment following the diagnosis and treatment of cancer. Further, fear of cancer progression or recurrence is one of the most frequent and persistent concerns individuals experience following a cancer diagnosis (Koch et al. 2013, Simard et al. 2013). Anxiety in anticipation of cancer-related surveillance scans (referred to as scanxiety) is also common during and following treatment (Bui et al. 2021, Custers et al. 2021). Fear of cancer progression or recurrence and scanxiety are distressing and are associated with significantly worse QoL (Bui et al. 2021, Koch et al. 2013, Simard et al. 2013). Furthermore, uncertainty about the future and concern for close others are two supportive care needs that individuals often report have not been adequately addressed by their care team (Armes et al. 2009, Harrison et al. 2009).

Psychological Adaptation: Resilience

Despite the considerable impact of cancer on psychological adaptation, individuals often demonstrate resilience. Facing cancer can lead to opportunities for positive change as individuals engage in efforts to find meaning in their experience (Algoe & Stanton 2009, Park et al. 2008, Stanton et al. 2006). Positive changes, such as enhanced life appreciation, improved social relationships, and a deepened sense of self and meaning that individuals attribute to stressful life experiences like cancer, have been referred to as benefit finding, post-traumatic growth, and personal growth (Helgeson et al. 2006, Tedeschi & Calhoun 2004). Most individuals who have completed cancer treatment report experiencing some level of post-traumatic growth in response to their cancer diagnosis and treatment (Jim & Jacobsen 2008, Stanton et al. 2006), which is generally associated with better psychological adaptation, including lower anxiety and depressive symptoms as well as better QoL and increases in optimism, hope, and positive affect (Algoe & Stanton 2009, Casellas-Grau et al. 2017, Rajandram et al. 2011, Stanton et al. 2006). Individuals with advanced or metastatic cancer also cite finding meaning at the end of life as important and perceive positive consequences as a result of their experience (Moreno & Stanton 2013). Importantly, the commonly used term “post-traumatic growth” is paradoxical in this context, given that advanced cancer often has an uneven course, which is not circumscribed to a definitive period with a beginning and an end as is more likely for illnesses treated with curative intent. Personal growth in the context of advanced cancer is positively associated with both distress, including depressive symptoms and cancer-specific intrusive thoughts and avoidance, and positive well-being, including optimism, positive affect, and acceptance (Moreno & Stanton 2013). This co-occurrence of personal growth with both cancer-related distress and positive well-being suggests that personal growth in this unique context is characterized by perceived positive consequences in the face of considerable demands, which may be reflected by greater negative and positive markers of psychological adaptation.

Physiological Adaptation

The multiple stressors that cancer patients must manage, from the point of diagnosis and treatment decisions, through surgical and adjuvant treatments, and into survivorship, require a substantial amount of emotional processing and adaptation, both psychologically and physiologically. The physiological basis of adapting to stressors was initially articulated by Hans Selye in his notion of general adaptation syndrome (Selye 1956). We know that aspects of stress responding in the face of acute short-term stressors are quite different from responses to chronic or repeated stressors, and these differences can be measured with neuroendocrine and immunological

SNS: sympathetic nervous system

NE: norepinephrine

β -AR: beta-adrenergic receptor

HPA: hypothalamic-pituitary-adrenal

indicators that may be particularly relevant in cancer patients (Antoni & Dhabhar 2019). Generally, chronic and repeated stressors are associated with immunologic changes that promote negative health outcomes in most populations, including cancer patients (Antoni & Dhabhar 2019).

One physiological system often implicated in responses to stressors is the sympathetic nervous system (SNS), which mediates neural signaling directly from brain regions such as the locus coeruleus (LC) to peripheral tissue via the sympathetic chain of neural fibers. Sympathetic neurons release norepinephrine (NE) at junctures with many vital organs, including the heart, as well as with immune-related lymphoid organs such as the lymph nodes, bone marrow, and gut-associated lymphoid tissue (GALT), which produce or house different types of immune cells that bear beta-adrenergic receptors (β -ARs) on their cell membranes (Cole et al. 2015). We now know that tumors also have nerves and β -ARs (Huang et al. 2014). This suggests that stress-related activation of the SNS with production of NE can communicate with immune cells as well as cancer cells. The SNS also controls the outflow of epinephrine (E) from the adrenal medulla into the circulation (sympathoadrenomedullary system, or SAM), and E is also capable of signaling immune and tumor cells via β -ARs. These responses may occur when stressors are acute and require an immediate, often physical, response, and hence they have been referred to as part of the fight-or-flight pattern. The SNS-mediated responses, however, are also evidenced during emotionally laden stressors and repeated stressors, and they co-occur with distress states such as depression and anxiety (Antoni & Dhabhar 2019).

Another physiological stress response system, the conservation-withdrawal response, is often associated with persisting, repeated, uncontrollable, and unpredictable stressors as well as distress states such as depression and threat/anxiety and is characterized by activation of and dysregulation of the hypothalamic-pituitary-adrenal (HPA) axis. Following the perception of uncertainty from cortical regions of the central nervous system, the hypothalamus produces corticotrophin-releasing hormone (CRH), which in turn signals the pituitary to release adrenocorticotrophic hormone (ACTH) into the circulation, which signals the adrenal cortex to produce the glucocorticoid cortisol (McEwen 2002). This system may be particularly relevant to the chronic, repeated, and uncertain nature of the periods surrounding cancer diagnosis, treatment, post-treatment survivorship, and disease recurrence. Importantly, cortisol is capable of interacting with immune cells via intracytoplasmic glucocorticoid receptors to affect cellular immune programming as well as function and inflammation (Antoni et al. 2006b, Chang et al. 2022, McEwen 2002). Finally, chronic elevations in cortisol have been proposed to downregulate glucocorticoid receptors (GRs) in immune cells, effectively dampening anti-inflammatory control after immune responses and resulting in increased systemic inflammation (Miller et al. 2008).

Psychological Stress and Neuroendocrine Regulation in Cancer

Many reviews focus on the influence of neuroendocrines on the immune system as a plausible explanation for stress effects on negative health outcomes in cancer patients (Antoni & Dhabhar 2019). These include stress effects on changes in immune cell adhesion and trafficking, cell-mediated immunity, humoral immunity, lymphocyte proliferation, macrophage responses, and natural killer cell cytotoxicity, many of which have potential roles in immune surveillance of cancer cells (Antoni & Dhabhar 2019). Stress factors can also enhance inflammatory signaling on the one hand and upregulate immunosuppressive signaling on the other, which could conspire to impair the host's ability to detect and destroy neoplastic cells (Cole et al. 2015, Falcinelli et al. 2021).

Other reviews of the field refer to a neurobiology of cancer articulating the links among psychosocial factors, the nervous system, and tumor tissue (Mravec et al. 2020). The production of NE, E, or cortisol has been proposed to mediate, in part, the effects of major chronic stressors

and distress states, such as those experienced by cancer patients, on processes that promote cancer progression and metastasis, including increased cell growth/proliferation rates; enhanced blood supply to cancer cells (angiogenesis); invasion into the vasculature; increased ability of tumor cells to survive in the circulation through epithelial-to-mesenchymal transition (EMT); and protection against programmed cell suicide (apoptosis) when tumor cells detach themselves from the extracellular matrix and move into the circulation (also known as anoikis) (Chang et al. 2022). We refer the interested reader to recent comprehensive reviews of this work (Chang et al. 2022, Eckerling et al. 2021, Falcinelli et al. 2021, Mravec et al. 2020).

The nervous system is believed to influence cancer initiation and progression via DNA mutations and oncogene signaling (Falcinelli et al. 2021). The nervous system is also believed to contribute to tumor growth and metastasis via direct interactions with nerves in tumors, neuro-hormonal modulation of immune cell presence via SNS-mediated efflux of myeloid cells from the bone marrow (Powell et al. 2013), and up-regulated tumor cell activity (and immune-tumor cross-talk) in the tumor microenvironment. These processes can facilitate angiogenesis and tissue remodeling (via matrix metalloproteases such as MMP-9), allowing vascular invasion and spread into the circulation (Chang et al. 2022, Cole et al. 2015).

Recent work suggests that stress-related neuroendocrines may even contribute to reactivating dormant cancer cells. For instance, stress hormones activating β -ARs can stimulate release of s100A8/A9 ligands from neutrophils, which promotes activation of the receptor for advanced glycation end (RAGE) products, causing release of oxidized lipids that activate dormant cancer cells via a fibroblast growth factor pathway (Perego et al. 2020). Interestingly, in postsurgical breast cancer patients, greater serum cortisol levels are associated with greater cancer-specific distress on the one hand and greater levels of s100A8/A9 on the other (Taub et al. 2022). Some work also shows that glucocorticoids may facilitate resistance of tumor cells to cytotoxic chemotherapy, rendering some cancer treatments less effective (Chang et al. 2022). These bodies of evidence join with other models emerging in the past 20 years proposing how stressors and psychosocial factors relate to cancer incidence, progression, and metastasis across different cancers (Falcinelli et al. 2021, Lutgendorf et al. 2010).

Preclinical animal models have shown that a variety of experimental stressors (forced swimming, isolation, surgery) (Antoni et al. 2006b, Eckerling et al. 2021) can increase the likelihood of cancer progression. Using an ovarian cancer model, investigators showed that isolation stress and/or administration of the β -AR agonist isoproterenol can upregulate processes supporting accelerated tumor growth, such as angiogenesis and vascular endothelial growth factor (VEGF) production, as well as changes supporting the metastatic spread of established tumors by increased tissue invasion, anoikis, and increased tumor EMT (Chang et al. 2022, Lutgendorf et al. 2010). The activation of the SNS and release of NE have also been proposed to mediate many of these effects in models of breast cancer (Sloan et al. 2010). Parallel clinical work has related psychosocial factors such as distress, depression, and low social support with greater levels of cortisol in breast cancer patients (Chang et al. 2022) and a flatter cortisol diurnal secretion pattern in patients with renal cell carcinoma (RCC) (Cohen et al. 2012). Flatter salivary cortisol diurnal pattern has been associated with shorter survival in breast (Sephton et al. 2000), lung (Sephton et al. 2013), and renal cell (Cohen et al. 2012) carcinomas.

Psychological Stress and Neuroendocrine-Mediated Changes in Immune Activation and Regulation in Cancer

Much work in the past 30 years has related stress processes to changes in immune system activity and regulation in cancer patients (Antoni & Dhabhar 2019). Much of the earlier work

VEGF: vascular endothelial growth factor

IL: interleukin

IFN: interferon

TNF: tumor necrosis factor

CTRA: conserved transcriptional response to adversity

SMI: stress management intervention

CBT: cognitive behavioral therapy

focused on associations of negative affect and depressive symptoms with in-vitro cellular immune function indicators such as lymphocyte proliferative responses (LPR), T-lymphocyte helper-type 1 (Th1) cytokine [interleukin-2 (IL-2) and interferon-gamma (IFN- γ)] production, and natural killer cell cytotoxicity (NKCC) in breast cancer patients (Andersen et al. 1998, Levy et al. 1987). More recently attention has turned to relating stress factors to indicators of systemic inflammation such as circulating interleukin-1-beta (IL-1 β), IL-6 and tumor necrosis factor-alpha (TNF- α), and upregulated immune cell (leukocyte) gene expression for these proinflammatory cytokines and others. For instance, among breast cancer patients undergoing primary treatment, greater depressive symptoms, negative affect, cancer-specific distress, and low social support have been related to greater serum IL-1 β , IL-6, TNF- α , IL-1 receptor antagonist (IL-1RA), and TNF receptor II (TNF-RII) levels (Blomberg et al. 2009, Bouchard et al. 2016, Bower et al. 2011); greater s100A8/A9 levels (Taub et al. 2019); greater leukocyte nuclear NF κ B DNA binding (Diaz et al. 2021); and greater leukocyte *IL1A*, *IL1B*, *IL6*, and *TNFA* gene expression as well as increased expression of several chemokine, COX2 (prostaglandin-E, or *PGE*), and prometastatic (e.g., *MMP-9*) genes (Antoni et al. 2012, Jutagir et al. 2017).

With growing interest in the effects of stress factors on transcriptional (gene expression) changes in cancer and immune cells, molecular work has related stress-related variables to a comprehensive gene expression profile termed the conserved transcriptional response to adversity (CTRA) (Slavich & Cole 2013). The CTRA pattern describes the impact of stress responses to threats on immune system components originally developed to optimize survival. Accordingly, immune responses to threatening stressors were initially designed to optimize innate immunity (inflammatory reactions) against bacterial infections due to physical attack by directing energy away from antiviral (interferon-mediated) and antibody [immunoglobulin (Ig)-making] immune system components. This CTRA pattern is believed to have been conserved as a response to modern-day psychosocial stressors (Fredrickson et al. 2013, Slavich & Cole 2013). Using a CTRA index based on 51 inflammatory (e.g., greater proinflammatory cytokines, chemokines, and COX2), antiviral (e.g., lower IFN type I and type II), and antibody (e.g., lower Ig) genes, researchers have related greater leukocyte CTRA expression to psychosocial adversity conditions such as greater negative affect, depressive symptoms, and lower socioeconomic status (SES) (Cohen et al. 2012, Knight et al. 2016) in cancer patients.

Psychological and Physiological Adaptation and Clinical Course of Cancer

There is growing evidence that adverse psychosocial factors (depression, distress, low social support, low SES) are associated with shorter survival time for a wide number of different cancers (Chida et al. 2008). For instance, greater depressive symptoms predict shorter overall survival in patients treated for nonmetastatic (Antoni et al. 2017) and metastatic (Giese-Davis et al. 2011) breast cancer and in patients with RCC (Cohen et al. 2012). Lower SES predicts shorter leukemia-free survival (Knight et al. 2016), and lower social support predicts shorter survival in patients with ovarian cancer (Lutgendorf et al. 2012). As noted previously, there are several comprehensive reviews of the neuroendocrine pathways underlying physiological stress responses and their associations with important biological processes that promote disease progression (Antoni & Dhabhar 2019, Antoni et al. 2006b, Chang et al. 2022, Eckerling et al. 2021). This literature provides a rationale for investigating the effects of stress management interventions (SMIs) to optimize health in cancer patients through their role in modulating biobehavioral processes. **Figure 1** summarizes our contemporary understanding of a biobehavioral model for the role of stressors, psychological responses, and neuroendocrine activity on peripheral tissue (immune and cancer cells) and the putative role of cognitive behavioral therapy (CBT)-based SMIs in modulating these processes in cancer patients.

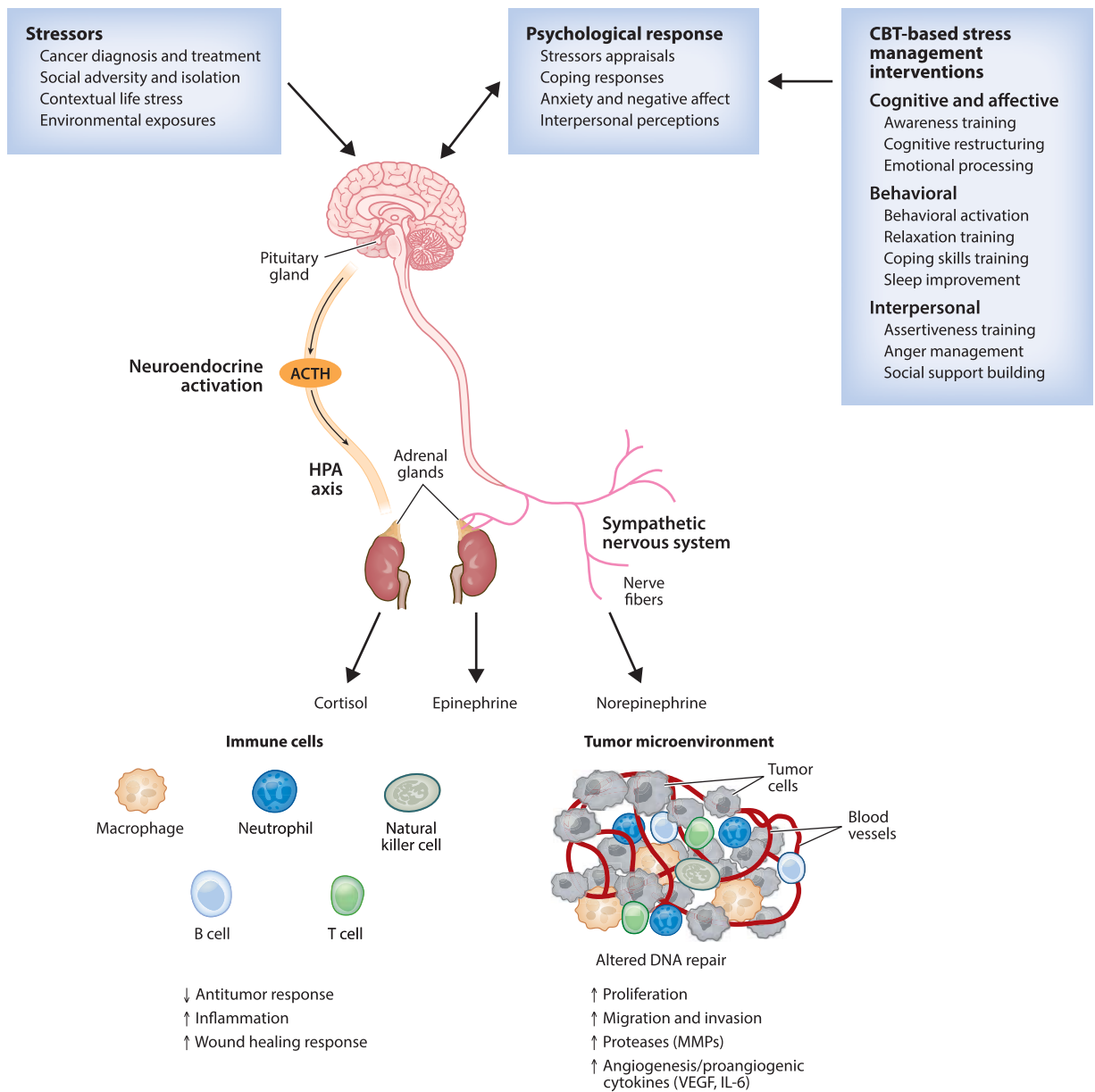


Figure 1

Biobehavioral model for stressors, psychological responses, neuroendocrine activity, and impact on peripheral tissue in cancer and their interactions with cognitive behavioral therapy (CBT)-based stress management interventions. Abbreviations: ACTH, adrenocorticotropic hormone; HPA, hypothalamic-pituitary-adrenal; IL, interleukin; MMP, matrix metalloproteinase; VEGF, vascular endothelial growth factor.

IMPACT OF STRESS MANAGEMENT INTERVENTIONS ON PSYCHOLOGICAL ADAPTATION IN CANCER PATIENTS AND SURVIVORS

What Constitutes a Stress Management Intervention?

Since modifying responses to stressors might improve adaptation to cancer, QoL, and health outcomes, several randomized controlled trials (RCTs) have tested interventions that can be considered SMIs in the past 50 years (Antoni & Dhabhar 2019). Some SMIs tested in cancer patients work by reducing tension in order to decrease physiological activation through physical techniques such as relaxation (typically muscle relaxation training and deep breathing), Yoga and Tai-Chi, massage, acupuncture, and biofield therapies (Antoni & Dhabhar 2019). Other SMI approaches focus on increasing awareness and developing a nonjudgmental attitude about ongoing stressors and stress appraisals via mindfulness meditation techniques (Antoni & Dhabhar 2019). A final set of SMIs work by teaching skills for modifying cognitive appraisals of stressors and developing new coping strategies through CBT techniques, such as cognitive restructuring and coping effectiveness training, and by building interpersonal/communications skills to better access and maintain coping resources such as social support (Antoni & Dhabhar 2019). CBT-based approaches will be the chief focus of this review.

It is noteworthy that other psychosocial/behavioral interventions that are not necessarily SMIs have shown efficacy in cancer populations. These include supportive expressive therapy (SET) (Spiegel et al. 1989) targeting existential issues; palliative care interventions targeting symptom and pain management (Temel et al. 2010); and physical exercise interventions targeting physical activity, strength, and aerobic fitness (McNeely et al. 2006). Because the effects of physical-based and mindfulness-based SMIs in cancer patients are covered in a separate review in this volume (Carlson 2023), we will focus mostly on the CBT-based SMI approaches (which often include CBT and relaxation techniques) and their effects on psychological adaptation, physiological adaptation, and clinical health outcomes. Interested readers are also referred to other recent narrative and quantitative reviews that summarize the biological and clinical health effects of some of these other intervention approaches in cancer patients and survivors (Chang et al. 2022, Eckerling et al. 2021, Mirosevic et al. 2019).

Cognitive Behavioral Therapy as a Stress Management Intervention to Facilitate Psychological Adaptation

CBT refers to a class of interventions that share three fundamental principles: Cognitions affect behavior, cognitive patterns can be monitored and changed, and desired change in behavior can be achieved through change in cognitions (Dobson & Dozois 2010). Specific CBT interventions vary in the degree to which they focus on cognitive change versus directly targeting behavioral change. In addition to its focus on cognitive and behavioral change, CBT also addresses the bidirectional impact of cognitions and behavior on both emotions and physiology. CBT interventions are typically brief, goal-oriented, and based on principles of learning and behavior change and aim to reduce symptoms, improve functioning, and remit psychiatric disorders (Hofmann et al. 2012). Examples of CBT intervention strategies include behavioral activation, cognitive restructuring, relaxation training, biofeedback, guided imagery, problem solving, assertiveness and communication training, contingency management, and systematic desensitization. CBT is one of the most widely studied intervention approaches and has strong evidence for effectiveness in several disorders and symptom clusters that are common in the cancer context, including anxiety, depression, and overall psychological distress and stress (Hofmann et al. 2012).

Effects of Cognitive Behavioral Therapy Interventions on Psychological Adaptation in Cancer Patients and Survivors

Research examining the effects of CBT on individuals affected by cancer has flourished. Meta-analytic evidence demonstrates that CBT interventions support psychological adaptation by reducing anxiety, depressive symptoms, and both general and cancer-specific emotional distress as well as by improving emotional well-being and overall QoL in both individuals diagnosed with cancer and their caregivers (Cobeanu & David 2018, Getu et al. 2021, Hart et al. 2012, Osborn et al. 2006, O'Toole et al. 2017, Tatrow & Montgomery 2006). CBT interventions also facilitate interpersonal adaptation and relationships with close others by improving social support, communication, sexual functioning, and overall relationship quality and satisfaction (O'Toole et al. 2017). With respect to symptom burden, CBT interventions reduce pain, sleep disturbance, fatigue, and treatment side effects like nausea and vomiting (Cobeanu & David 2018, Getu et al. 2021, Johnson et al. 2016, Sheinfeld Gorin et al. 2012, Tatrow & Montgomery 2006).

Nevertheless, research on the effects of CBT includes mixed findings. Observed effect sizes range from small to large (Cobeanu & David 2018, Osborn et al. 2006, O'Toole et al. 2017), and there are null findings for pain, physical functioning, overall QoL, and targets of intervention such as coping skills and self-efficacy (Osborn et al. 2006, O'Toole et al. 2017). Mixed findings may be due to significant variability in methodological design such as face-to-face versus online/telephone delivery, individual- versus group-based intervention, duration and number of sessions, and active versus nonactive controls. Furthermore, eligibility criteria vary by cancer type, stage of diagnosis, time since diagnosis, and active treatment versus post-treatment completion/surveillance. Some evidence suggests that women and younger individuals may benefit more from CBT interventions (O'Toole et al. 2017) and individual-based interventions may be superior to group-based interventions (Cobeanu & David 2018, Tatrow & Montgomery 2006). In contrast, other reviews have suggested that older and unpartnered cancer patients and those with earlier-stage disease may show greater effects of CBT-based SMIs on long-term health outcomes (Mirosevic et al. 2019). However, analyses examining whether design characteristics moderate the effects of CBT have yielded few significant results, and more research is needed (Cobeanu & David 2018, Getu et al. 2021, O'Toole et al. 2017).

Studies of CBT interventions in the cancer context have largely focused on women with early-stage breast cancer (Cobeanu & David 2018, Getu et al. 2021, Tatrow & Montgomery 2006). Importantly, few studies select for cancer patients and survivors with baseline elevations in distress and symptom burden, despite growing meta-analytic evidence suggesting that these individuals benefit most from psychological interventions (Heron-Speirs et al. 2012, Schneider et al. 2009, Sheard & Maguire 1999). It is difficult to demonstrate the benefit of CBT in individuals with low levels of baseline distress or symptom burden as outcomes of interest have little room for improvement (Stanton 2005). One meta-analysis demonstrated that CBT decreases symptoms of depression among individuals with cancer who had elevated symptoms at baseline with effect sizes that were significantly larger than those of problem-solving therapy and marginally larger than those of pharmacologic interventions (Hart et al. 2012). Therefore, more research is needed to understand the impact of CBT interventions among individuals with a diversity of cancers, including rare cancers and advanced/metastatic cancers. Some CBT-based interventions have been explicitly developed to serve as SMIs.

Cognitive Behavioral Stress Management Effects on Psychological Adaptation in Cancer Patients and Survivors

Cognitive behavioral stress management (CBSM) is a 10-week CBT-based SMI that incorporates cognitive, behavioral, and interpersonal skills training and relaxation training through in-session

CBSM: cognitive behavioral stress management

didactic and role-playing activities as well as homework and daily practice to help improve QoL and reduce symptoms (Antoni 2003a, Penedo et al. 2008). This protocol integrates core CBT principles and practices such as cognitive restructuring (identifying and disputing irrational or maladaptive thoughts), behavioral activation (engagement in pleasant experiences, social activity, or experiences of mastery), and relaxation training like diaphragmatic breathing, progressive muscle relaxation, and meditation/imagery. Example CBSM intervention topics include introducing stress awareness and physical responses, stress awareness and the appraisal process, automatic thoughts and cognitive distortions, cognitive restructuring and rational thought replacement, coping strategies, social support, anger management, and assertiveness training. Research demonstrates that CBSM confers numerous effects on psychological adaptation in cancer survivors, including improved overall QoL and social support, increased positive affect, benefit finding, and relaxation and coping skills as well as reduced depressive symptoms, anxiety, and emotional distress (Addison et al. 2022; Antoni et al. 2006a,c, 2009; Penedo et al. 2004, 2006; Tang et al. 2020).

IMPACT OF STRESS MANAGEMENT INTERVENTIONS ON PHYSIOLOGICAL ADAPTATION AND HEALTH OUTCOMES IN CANCER PATIENTS

Methodologic Considerations

It is challenging to use psychological interventions as a paradigm to test the impact of stress reduction on psychological adaptation to cancer and its treatment, on changes in stress physiology, and on long-term clinical outcomes and survival (Antoni & Dhabhar 2019). This requires demonstrating that a specific SMI can (*a*) modulate psychological adaptation indicators (e.g., stress management skill efficacy, reduced distress, anxiety, depression) in cancer patients in tandem with (*b*) changes in neuroendocrine indicators (decreased or normalized SNS and HPA axis activity), (*c*) immune measures (decreased circulating inflammatory markers and inflammatory signaling in cells, and increased cellular immune function), and (*d*) long-term effects on QoL and physical health status (cancer recurrence, survival/mortality) (Antoni & Dhabhar 2019). Such studies are difficult because they require recruiting patients into an RCT at a specific point in treatment (e.g., at diagnosis, pre- or post-surgery, during primary treatment, or at the time of disease recurrence); inducing improvements in psychological (distress) and physiological (neuroendocrine and immune parameters) adaptation via SMI across the initial period of treatment and into survivorship; and following cohorts for several years for clinical outcomes. We first present evidence that various CBT-based SMIs shown to improve psychological adaptation also show salutary effects on physiological adaptation (neuroendocrine and/or immune system variables) in cancer patients. We then highlight research on a couple of SMIs showing long-term clinical benefits that may be explained by earlier physiological changes. Finally, we compare and contrast these interventions and the study designs used to demonstrate these effects.

Effects of Stress Management Interventions on Physiological Adaptation in Cancer Patients and Survivors

The RCTs showing neuroendocrine and/or immune system effects of SMIs on cancer patients have been limited to trials enrolling nonmetastatic cancer patients, including patients with breast cancer and malignant melanoma, at the early stages of diseases. Generally, studies showing intervention effects on physiological adaptation in cancer patients also showed parallel effects on psychological adaptation (McGregor & Antoni 2009). An early study demonstrating the effects of SMIs on immune indices was an RCT showing that stage 1–2 malignant melanoma patients

assigned to a 6-week group CBT-based SMI (coping skills training, relaxation) improved psychological adaptation (negative mood) at 6 weeks (Fawzy et al. 1990a) and cellular immune functioning (NKCC) at 6 months (Fawzy et al. 1990a). This trial showed that SMIs can improve indices of cellular immunity in patients who are receiving only surgical intervention. Can SMIs help promote recovery or preservation of immune functioning as patients go through the storm of adjuvant therapies?

A 12-month group-based SMI that included relaxation and CBT-based stress reduction exercises, coping skills training, and health education in 14 weekly sessions and 8 monthly maintenance sessions decreased distress and negative health behaviors (eating high-fat foods and tobacco smoking) over the initial 4 months, and it increased cellular immunity [lymphocyte proliferative response (LPR)] compared to treatment as usual in stage 2–3 breast cancer patients recruited in the period after surgery (Andersen et al. 2004).

Similarly, a 10-week group CBSM intervention (Antoni 2003b) was tested in stage 0–3 breast cancer patients at a similar point in their treatment (2–10 weeks post-surgery and prior to initiating adjuvant chemotherapy or radiation). In two separate RCTs, compared to a 1-day psycho-educational (PE) control, CBSM was shown not only to improve cancer-specific distress, mood, social adversity, and QoL (Antoni et al. 2001, 2006a,c) but also to decrease afternoon-evening (PM) serum cortisol levels (Phillips et al. 2008) and increase LPR and IL-2 and IFN- γ production (Antoni et al. 2009, McGregor et al. 2004). This is one of the only SMIs showing reductions in serum cortisol in two separate trials (Cruess et al. 2000, Phillips et al. 2008). Showing reductions in evening cortisol is relevant because flatter diurnal cortisol slopes (due partly to higher PM levels) have been associated with several cancer-promoting processes noted previously (Chang et al. 2022) and with decreased survival in breast cancer (Sephton et al. 2000), nonsmall cell lung cancer (Sephton et al. 2013), and RCC (Cohen et al. 2012). CBSM effects on LPR in one trial (McGregor et al. 2004) mirror those found in the prior 12-month CBT-based SMI by Andersen et al. (2004). CBSM effects on Th1 cytokine (IL-2 and IFN- γ) production in a second trial (Antoni et al. 2009) may be important for supporting cellular immune processes involved in tumor eradication as well as for promoting protection against opportunistic viral infections during adjuvant therapy.

CBSM was also shown to affect inflammatory signaling using leukocyte gene expression measures (Antoni et al. 2012). Those assigned to CBSM (versus PE control) showed altered expression of 91 leukocyte genes over the 6–12 months of treatment. These effects included downregulation of 62 genes for proinflammatory cytokines (*IL1B*, *IL6*, *TNF*), of inflammatory chemokines and their receptors (*COX2/PGS2*), and of mediators of tissue remodeling and EMT (e.g., *MMP-9*), together with upregulation of 29 genes related to cellular immune responding (type I IFN response, type II IFN signaling, and IFN signal transduction) (Antoni et al. 2012). Over 50% of the genes affected by CBSM were the same genes associated with negative affect at baseline. Since women assigned to CBSM showed significant concurrent reductions in negative affect and increases in positive affect, these transcriptional changes are likely attributable to the psychological adaptation improvements reported by women in CBSM. Bioinformatic analysis of this pattern of gene expression change inferred decreased NF κ B/Rel and globin transcription factor (GATA) family activity and increased IFN response factors, all of which were linked to SNS signaling in prior work (Stark et al. 2001). Those in CBSM also showed increased expression of GR-related genes relative to controls and an overrepresentation of GR response elements in the promoters of CBSM-upregulated genes (Antoni et al. 2012). This provides compelling neuroimmune evidence that CBSM may reverse stress-induced GR desensitization (Miller et al. 2008), which could subsequently act to reduce inflammatory signaling (Miller et al. 2009). A reanalysis of this trial used gene expression results in a 51-gene CTRA composite score and noted that while breast cancer patients assigned to PE control showed marked increases in CTRA, those in CBSM showed slight

decreases over 12 months of cancer treatment (Antoni et al. 2016). This pattern whereby CBSM mitigates a rise in CTSA signaling over the storm of adjuvant therapy (radiation and chemotherapy) has clinical significance in the context of ongoing cancer treatments, which are known to be proinflammatory.

Effects of Stress Management Interventions on Physical Symptoms During and After Cancer Treatment

The literature documenting the effects of cognitive-based SMIs on physical health outcomes ranges from studies showing relatively short-term effects on physical symptoms during and after cancer treatment to those showing longer-term effects on clinical disease endpoints, such as disease-free interval (time till recurrence) and cancer-specific and overall survival. Among studies of physical symptoms during cancer treatment, some CBT-based SMIs have been associated with reductions in sleep disruption (Lechner et al. 2014, Savard et al. 2005), fatigue severity and fatigue-related disruption (McFarland et al. 2021, Vargas et al. 2014), and pain (Key et al. 2021) and improved sexual and urinary functioning (Molton et al. 2008). CBT-based SMIs have also been associated with improvements in general health ratings by staff and patient-reported outcomes of health-related QoL and well-being. For instance, stage 2–3 breast cancer patients undergoing treatment assigned to a 12-month CBT-based SMI showed better health status based on staff ratings at 12-month follow-up, and initial reductions in distress at 4 months predicted better health status at 12 months (Andersen et al. 2007a). Breast cancer patients assigned to a 10-week CBSM intervention reported improved fatigue-related daily dysfunction and sleep quality, less difficulty falling asleep, and reductions in onset insomnia over 12 months, with sleep latency effects mediated by increased perceived stress management skills (Vargas et al. 2014). Greater improvements in sleep quality also predicted greater reductions in fatigue-related daily dysfunction over 12 months.

Men treated for prostate cancer report significant physical side effects, including sexual and urinary dysfunction, fatigue, and pain, along with anxiety and depressive symptoms, decreased QoL, and threats to masculine identity (Bennett & Badger 2005, Lintz et al. 2003). Among men treated for early-stage prostate cancer, a 10-week CBSM (versus a 1-day PE control) improved QoL (Penedo et al. 2004) and sexual functioning pre/post intervention (Molton et al. 2008), and CBSM effects on QoL were mediated by improved perceived stress management skills (Penedo et al. 2006). Men entering the intervention with higher levels of anxiety or interpersonal dysfunction (e.g., hostility, interpersonal sensitivity) derived greater benefit from the intervention, as evidenced by greater improvements in sexual and urinary function, relative to men with lower levels of these traits. A Spanish-language version of CBSM with some attention to cultural factors (e.g., family interdependence) improved sexual function and physical, emotional, and total well-being in monolingual Hispanic men treated for prostate cancer (Penedo et al. 2007). Although most studies of CBT-based SMIs have been restricted to patients with breast or prostate cancer, there is evidence that CBT-based approaches may mitigate physical symptoms in other types of cancer during treatment and into survivorship (Breitbart et al. 2021).

Effects of Psychological Intervention on Long-Term Clinical Outcomes in Cancer Survivors: Initial Studies

The question of whether psychosocial interventions can improve long-term clinical outcomes in cancer patients has been of longstanding interest and a source of controversy in the field since the report by Spiegel et al. (1989) that metastatic breast cancer patients randomized to a 12-month group-based SET intervention appeared to live twice as long (~36 months) as those assigned to treatment as usual (~18 months). This report was a major driver of RCTs over the next 30 years

testing a variety of different psychosocial interventions for survival effects. Efforts to replicate these effects in metastatic breast cancer patients have been unsuccessful to date in larger samples using the same SET intervention protocol (Goodwin et al. 2001, Spiegel et al. 2007), though subgroups of patients with a poorer prognosis (those with estrogen receptor-negative disease) have shown improved survival with SET (Spiegel et al. 2007). However, other trials testing CBT-based and SET-based interventions in patients with metastatic breast cancer have also failed to show effects on overall survival (Kissane et al. 2007).

In one of the first trials to report the effects of a CBT-based SMI on psychological, biological, and health outcome parameters, Fawzy and colleagues observed among 66 patients with malignant melanoma that those assigned to a 6-week group intervention showed improved coping and mood (Fawzy et al. 1990a), increases in NKCC (Fawzy et al. 1990b), and longer survival and lower odds of recurrence over a 6-year follow-up (Fawzy et al. 1993), but these effects on survival were no longer significant at 10 years (Fawzy et al. 2003). Unfortunately, it does not appear that this group reported associations between intervention-related biological changes and long-term clinical outcomes.

Meta-Analyses of Effects of Stress Management Interventions on Long-Term Survival in Cancer

Looking across the entire psycho-oncology literature, several reviews reported primary or secondary analyses of RCTs for which follow-up data on clinical endpoints were available for periods ranging from 1 to 15 years. Efforts to summarize this literature have appeared in multiple qualitative and quantitative reviews (and at least 8 meta-analyses) in the past 10 years (Antoni 2013, Eckerling et al. 2021, Mirosevic et al. 2019, Oh et al. 2016). A meta-analysis of 15 RCTs completed prior to 2015 and meeting Cochrane criteria for methodological quality involved nearly 3,000 cancer patients (Oh et al. 2016). Results indicated no overall survival benefits of a variety of psychosocial interventions; however, interventions delivered early in disease (in 6 trials with 1,448 patients with nonmetastatic disease) showed a 41% reduced risk of cancer mortality (Oh et al. 2016). Since the time of this meta-analysis, other major reviews and meta-analyses have generally supported the notion that SMIs may show significant effects on overall survival in cancer patients (Eckerling et al. 2021, Mirosevic et al. 2019). These later reviews are based on trials published up to 2017, include patients with multiple cancer types and disease stages, and focus on interventions of various theoretical orientations (e.g., CBT, SET) and delivery formats (individual, group).

One recent review focused on 22 studies reporting long-term effects of what were referred to as stress-reducing interventions among patients with nonmetastatic breast cancer ($N = 5$), metastatic breast cancer ($N = 7$), malignant melanoma ($N = 2$), and several other cancer types ($N = 8$) including lymphoma; esophageal, lung, and gastrointestinal cancer; and samples of mixed cancer types (Eckerling et al. 2021). These trials were quite heterogeneous regarding sample size ($N = 60$ – 303), cancer type and stage, treatment orientation, individual versus group delivery format, duration, and timing within the cancer care continuum. Eckerling et al. (2021) noted that of the 22 studies examined, 8 reported a significant survival effect. Among breast cancer patients, the two trials showing survival benefits for patients with nonmetastatic disease were CBT-based group SMIs with 11-year follow-up periods (Andersen et al. 2008, Stagl et al. 2015b), and the one showing survival benefits for metastatic breast cancer was group SET with a 10-year follow-up (Spiegel et al. 1989). Among interventions for malignant melanoma, CBT-based SMIs showed survival effects in one trial over a 6-year follow-up (Fawzy et al. 1993) but not in another trial with a 4- to 6-year follow-up (Boesen et al. 2011).

A more selective meta-analysis included 12 trials ($N = 2,439$ patients) drawn from the Cochrane Central Registry of Controlled Trials, Ovid MEDLINE, PubMed, PsycINFO, and

prior meta-analyses for the period 1970–2017. Included trials met several a-priori selection criteria [e.g., randomization, sufficient number of events (>10% deaths), use of intent-to-treat (ITT) analysis] (Mirosevic et al. 2019). The meta-analysis reported an overall significant but small-to-moderate effect of psychosocial interventions on survival from study entry until death [mortality hazard ratio (HR) = 0.71; 95% confidence interval (CI) = 0.58–0.88; $p < 0.002$] (Mirosevic et al. 2019). Among all psychological interventions examined, the effects were stronger in persons who were not partnered ($p < 0.005$) and in older (≥ 60 years) versus younger (< 50 years) patients ($p < 0.01$) (Mirosevic et al. 2019). Of interest for the present review, they also reported that for CBT-based interventions, the treatment arm was more likely to show significant effects on overall survival in cancer patients recruited at earlier stages of disease (early HR = 0.30 versus later stage HR = 1.1; $p = 0.01$ for difference). In fact, the two studies showing the largest effects on survival were both group CBT-based SMIs in nonmetastatic breast cancer patients followed over an 11-year median. Andersen et al. (2008) reported HR = 0.44, 95% CI = 0.22–0.86; Stagl et al. (2015b) reported HR = 0.21, 95% CI = 0.05–0.93; and both studies reported large effect sizes. In terms of clinical significance, these two trials yielded number needed to treat (NNT) values of 1.53 (Stagl et al. 2015b) and 2.92 (Andersen et al. 2008), with $NNT \leq 3$ considered a large effect (Citrome 2008). Since these two trials accounted for 467/2439 (20%) of the cases analyzed in the meta-analysis, we now review them in further detail.

Exemplars of Modern Trials That Demonstrate the Effects of Stress Management Interventions on Long-Term Clinical Health Outcomes in Breast Cancer Patients

We now focus on the two trials showing CBT-based SMI effects on psychological adaptation, physiological adaptation, and long-term clinical health outcomes within the same trial, and we examine the evidence showing that changes in physiological adaptation predict or mediate the magnitude of the interventions' effects on clinical outcomes measured at up to 15 years into survivorship. This affords the opportunity to study the interventions' effects not only on overall and cancer-specific survival but also on disease-free interval—that is, the period of time patients remain free of a recurrence of primary disease or a secondary cancer.

Andersen et al. (2008) reported that among 227 nonmetastatic stage 2–3 breast cancer patients, those assigned to the 12-month group CBT-based SMI described previously (Andersen et al. 2004), followed for 8–13 years, showed significantly greater 11-year median overall and breast cancer-specific survival rates as well as a 45% reduced risk of cancer recurrence compared to those assigned to treatment as usual. In a subgroup of depressed women in this cohort monitored over this follow-up period, those receiving the intervention showed decreases in total white blood cells (WBC) and neutrophils (changes consistent with less systemic inflammatory signaling) compared to controls (Thornton et al. 2009). Importantly, women whose cancer recurred revealed greater serum cortisol and inflammation (greater total WBC and neutrophils) 17 months prior to their recurrence (Thornton et al. 2008). Moreover, those who experienced a distal recurrence had weaker cellular immune responses (LPR, NKCC) and greater elevations in WBC compared to those experiencing only a local recurrence (Thornton et al. 2008). During the 12 months following recurrence, the intervention group also showed improved psychological adaptation (decreased negative mood and increased social support) and physiological adaptation (greater LPR and NKCC), suggesting some protection against stress-related biological changes during the challenges of further treatments for their disease progression. Finally, women who had received the intervention previously had a lower risk of death over the subsequent 80 months post-recurrence compared to controls (Andersen et al. 2010). Taken together, these analyses support the

hypothesis that a CBT-based SMI that improves psychological adaptation (i.e., decreases distress) may maintain better physiological adaptation during the disease-free years of survivorship, reduce the odds of mortality and recurrence, and promote persisting benefits even after disease recurrence.

Another RCT reported CBT-based SMI effects on psychological adaptation (Antoni et al. 2006c), physiological adaptation (Antoni et al. 2009, Phillips et al. 2008), and long-term clinical health endpoints (Stagl et al. 2015b). Among 240 women with stage 0–3 breast cancer, those assigned to a 10-week CBSM group intervention showed lower odds of mortality and recurrence at 8–15-year (11-year median) follow-up over and above the effect of age, time since surgery, stage, tumor receptor type (estrogen receptor/progesterone receptor), tumor size, and adjuvant therapy (Stagl et al. 2015b). In analyses of patients matched for the same stage (stage 2–3) as the patients enrolled in Andersen et al.'s (2008) trial, CBSM showed even larger reductions in odds of breast cancer mortality and recurrence (Stagl et al. 2015b). It is noteworthy that survivors in this cohort followed with self-report measures over 8–15 years also reported significantly lower depression and better QoL at 11-year median follow-up compared to controls (Stagl et al. 2015a). This suggests that intervention effects were durable and remained in place over the period of monitoring long-term health outcomes. Investigators then tested whether changes in physiological adaptation via CBSM could explain its effects on disease-free survival (DFS). This is because most biobehavioral models of stress and cancer course propose that stress-induced neuroendocrine effects on immune and tumor cell signaling may enhance the odds of metastatic spread and disease recurrence (e.g., via angiogenesis, invasion, EMT, anoikis) (for reviews, see Antoni & Dhabhar 2019, Antoni et al. 2006b, Chang et al. 2022, Cole et al. 2015, Eckerling et al. 2021). Since Andersen and colleagues' RCT had implicated inflammation and WBC recruitment in predicting breast cancer recurrences (Thornton et al. 2008, 2009), investigators tested whether CBSM-induced changes in circulating leukocyte transcriptional activities during initial treatment explained the effects of CBSM on increased 11-year DFS in this cohort. To do so, they used the previously described CTRA gene expression composite (Fredrickson et al. 2013) at baseline, 6 months, and 12 months. Patients assigned to the control showed significant increases in CTRA in their leukocytes over the 12 months of the trial, while those assigned to CBSM showed small decreases; a lower CTRA increase over the 12 months of initial treatment predicted greater 11-year DFS (Antoni et al. 2016). Interestingly, most recurrences had taken place by the 8-year follow-up, and about 80% of women classified in the low CTRA change group remained disease free over this time compared to only 20% of those in the high CTRA increase group, even after controlling for age, stage, and chemotherapy, radiation, and endocrine therapy receipt (DFS HR = 6.32; 95% CI = 1.41–28.34) (Antoni et al. 2016).

It is plausible that adjuvant therapy receipt increases CTRA signaling and that this is compounded by chronic stress during initial treatment. If so, CBSM may mitigate the contribution of chronic stress to CTRA, and maintaining lower CTRA over this cancer treatment period may decrease the odds of pro-metastatic signaling and thereby improve long-term DFS (Antoni et al. 2016). This explanation of the effects of CBSM—and possibly other SMIs (e.g., Andersen et al. 2008)—on long-term health outcomes in breast cancer patients implies that when delivered during initial treatment, SMIs work by mitigating the compounding effects of stress on an already biologically adverse milieu. Specifically, CBT-based SMIs might improve long-term health outcomes in breast cancer patients by modulating the activities of immune cells (e.g., inflammation), which have the potential to communicate with cancer cells and other immune cells in the tumor microenvironment to promote metastasis (Antoni & Dhabhar 2019, Chang et al. 2022). This may also have implications for SMIs in other cancers, since greater expression of this same combination of genes (i.e., CTRA) also predicts increased relapse risk and decreased leukemia-free survival in

recipients of hematopoietic stem cell transplant (HSCT) for acute myelogenous leukemia (Knight et al. 2016).

Which aspects of these two comprehensive SMI trials of breast cancer patients can provide guideposts for future mechanistic work in the field? Although conducted by different laboratories, the two CBT-based SMI RCTs in nonmetastatic breast cancer patients reviewed here are similar in terms of sample size ($N = 227$ and $N = 240$), timing (>2 weeks post-surgery and prior to starting adjuvant therapy), intervention format (group), theoretical orientation (CBT-based SMI), frequency (weekly for initial training over 10–14 weeks), and follow-up intervals for main outcomes (psychological and immune measures over 12 months, clinical disease outcomes over a median of 11 years). A deeper look at each trial reveals that reported distress and/or cortisol decreases were related to either increased frequency of relaxation practice or increased confidence in using SMI skills such as relaxation and cognitive restructuring (Andersen et al. 2007b, Phillips et al. 2011). Although the disease stage range of the samples did differ in the two trials [stage 2–3 in Andersen et al.'s (2008), stage 0–3 in Stagl et al.'s (2015b)], women in the SMI conditions had similar reduced odds of a recurrence compared to controls [HR = 0.55 in Andersen et al.'s (2008), HR = 0.45 in Stagl et al.'s (2015b)]. When analyses were restricted to stage 2–3 cases only, intervention effects on recurrence were somewhat higher in CBSM. A similar pattern was evident for all-cause mortality and breast cancer-specific mortality, with larger impact for CBSM when restricted to stage 2–3 cases. This suggests that although CBT-based SMIs appear more effective in nonmetastatic cases (stage 0–3) on meta-analyses (Mirosevic et al. 2019), their effect on clinical health outcomes may actually be strongest in women with mid-stage disease (stage 2–3), where the odds of metastasis and mortality are higher than in earlier stages (stage 0–1).

Differences in the two trials include a longer period of continuous intervention [12 months in Andersen et al.'s (2008) versus 10 weeks in Stagl et al.'s (2015b)] and an additional focus on health behavior change in one intervention (Andersen et al. 2008). Comparing trial results suggests that it may be plausible to produce long-term health benefits in the briefer program with a sole focus on SMI skills training. This raises the question of whether an even briefer SMI could be enough to modulate similar biological pathways (i.e., inflammation) by modifying psychological adaptation in cancer patients undergoing treatment. This is also relevant for implementation considerations, since even a 10-week intervention might be challenging to deliver in clinical oncology settings. Because each intervention uses a combination of elements, including relaxation training, various CBT techniques, and also health education in one intervention (Andersen et al. 2008), it is important to understand which elements are accounting for these salutary effects.

A dismantling trial subsequently compared the psychological and physiological adaptation effects of three time- and attention-matched group interventions: 5-week relaxation training versus 5-week CBT versus 5-week health education in postsurgical breast cancer patients. Those assigned to either relaxation training or CBT showed improved mood and emotional well-being compared to those in health education, with similar effects in CBT and relaxation training conditions (Gudenkauf et al. 2015). Importantly, women assigned to either CBT or relaxation training also showed lower increases in inflammatory signaling (circulating s100A8/A9 levels; Taub et al. 2019) and NF κ B DNA binding (Diaz et al. 2021) over 12 months compared to those in health education, with results similar in CBT and relaxation training. Specifically, women in health education showed significant increases in s100A8/A9 levels across the period of cancer treatment, while those in relaxation training or CBT showed slight declines (Taub et al. 2019). A separate study conducting intensive molecular analyses on women drawn from the same trial who had elevated cancer-specific distress at study entry examined changes in leukocyte cell nuclei over 12 months (Diaz et al. 2021). Again, women in health education revealed significant increases in nuclear NF κ B DNA binding over 12 months, while those in CBT or relaxation training revealed

small decreases over the same period (Diaz et al. 2021). These intervention effects on s100A8/A9 and NFκB DNA binding mirror a similar pattern observed in leukocyte proinflammatory gene expression in women with breast cancer participating in the trial of 10-week CBSM, who showed mitigation of the rise in CTRA (which includes five genes relevant for NFκB binding: *NFKB1*, *NFKB2*, *REL*, *RELA*, and *RELB*) (Antoni et al. 2016).

In terms of intervention-related processes, women receiving these brief SMIs showing the greatest increases in perceived stress management skills (i.e., relaxation, cognitive restructuring) pre/post intervention showed the lowest s100A8/A9 levels and NFκB binding over 12 months (Diaz et al. 2021, Taub et al. 2019). Less cancer-specific distress (i.e., intrusive thoughts) and noncancer-specific negative affect at 12 months are related to less NFκB binding (Diaz et al. 2021). This strongly implicates that changes in stress management processes and in psychological adaptation can account for these biological changes. Since all three interventions were 5 weeks long and group based, the differential effects of SMI (CBT or relaxation training) versus health education are likely due to stress management skills training rather than attention or group support, though the interactive effects of SMI training plus group support cannot be separated out. These findings may be clinically relevant, since s100A8/A9 levels have been shown to predict breast cancer metastasis (Kwak et al. 2017), and greater NFκB nuclear binding may enhance inflammatory gene expression underlying the CTRA pattern, which was shown to predict disease-free survival in breast cancer patients (Antoni et al. 2016). This cohort is currently being followed to assess the long-term clinical impact of these brief SMIs.

EMERGING TOPICS IN STRESS MANAGEMENT RESEARCH IN CANCER

With growing evidence that CBT-based SMIs can help cancer patients manage the stress of treatment to improve psychological and physiological adaptation and clinical health outcomes, several new research foci are emerging in the field. We highlight a number of these in the Future Issues section. We end here with a summary of four issues that may be especially salient for moving forward the research on SMI in cancer in the coming decade.

Role of Central Nervous System Processes in Research on Stress Management Interventions

First, we lack an understanding of the brain activities related to stress processing in cancer patients that could inform development of more precise SMI approaches. Reviews of the brain imaging literature have identified some key cortical and subcortical regions whose activity relates to individual differences in depressive symptoms, anxiety, and distress levels in cancer patients; these reviews have proposed the interoceptive network as a key network that should be included in future studies investigating brain-mediated biobehavioral processes in cancer (e.g., Reis et al. 2020). Greater distress/negative affect has been associated with less activity in cortical and subcortical regions that are important to stressor processing, including the anterior insula, thalamus, hypothalamus, ventromedial prefrontal cortex (PFC), and lateral PFC (Reis et al. 2020). To the extent that activity in the PFC and other regions is critical for optimal stress processing and stress management, this work suggests objective neural indicators that may be useful in future SMI research with cancer patients (Reis et al. 2020).

Testing Pharmacologic Stress Management Interventions

Second, emerging work is using pharmacologic SMIs to directly modulate more peripheral stress-related neuroendocrine, immune, and tumor cell processes. To the extent that CBT-based SMIs

may improve clinical outcomes in cancer patients by modulating biological processes, it is intriguing to ask whether other approaches could improve clinical outcomes by chemically modulating peripheral stress-associated pathways using pharmacologic interventions. One pharmacologic approach targets stress physiology pathways directly by using agents that antagonize SNS signaling (e.g., nonselective β -adrenergic blockade), whereas another approach uses anti-inflammatory agents (e.g., COX2 inhibitors) (for reviews, see Antoni et al. 2021, Chang et al. 2022). The rationale for these approaches is based on preclinical work showing that NE and isoproterenol can enhance cancer-promoting processes (angiogenesis, anoikis), which are abrogated with β -adrenergic antagonists, and on clinical work showing that incidental use of β -blockers and COX2 inhibitors for other conditions is associated with reduced risk of cancer metastasis in humans (Antoni & Dhabhar 2019, Chang et al. 2022, Eckerling et al. 2021). For instance, the use of β -blockers is linked to reduced rates of progression (overall and disease-free survival) for solid (e.g., breast cancer, melanoma, colorectal cancer, lung cancer) and hematologic (e.g., multiple myeloma) malignancies (for reviews, see Chang et al. 2022, Eckerling et al. 2021). Future work might test whether a presurgical cocktail of a β -blocker (propranolol) and a COX2 inhibitor (etodolac), combined with brief CBT-based SMI in the postsurgical period, could provide an optimal regimen to facilitate the success of primary treatment for breast cancer and possibly other cancers (Antoni & Dhabhar 2019, Reis et al. 2020). There is also emerging work showing that stress-related changes in neuroendocrines may activate dormant cancer cells as well as interfere with the effectiveness of chemotherapeutic agents in controlling cancer (for a review, see Chang et al. 2022). This raises the provocative question, Could a combined pharmacologic and behavioral SMI regimen reduce the likelihood of stress-induced cancer cell activation and/or resistance to chemotherapy?

Testing Effects of Stress Management Interventions on Long-Term Cancer-Associated Pathophysiologic Processes and Accelerated Aging

A third emerging area of research examines the effects of stress factors and SMIs on long-term cancer-associated pathophysiological processes (i.e., atherosclerosis, immune senescence) that accelerate mental and physical health decline in cancer survivors years after their treatments are completed [i.e., cancer accelerated aging (CAA)]. CAA is defined as the combined effects of cancer diagnosis, treatment, and their sequelae on the physiological aging process (Guida et al. 2019). Two areas of CAA in cancer survivorship include the role of the diminished immunoregulation in infectious disease (Dignani et al. 2014, Shehata & Karim 2014) and cardiovascular disease (CVD) (Mehta et al. 2018). For example, immune responses to influenza vaccination in cancer patients receiving treatment are weakened (Shehata & Karim 2014), and influenza A is associated with a 66% greater incidence of pneumonia and an 18% mortality rate at 30 days in cancer patients (Dignani et al. 2014). Because stress factors can diminish the immune response to the influenza vaccine in older populations, and because inflammatory processes, which increase with age, stress, negative affect, and cancer treatment, diminish the vaccine response (Antoni & Dhabhar 2019), another needed application of SMI work is in the context of preventing opportunistic infections that occur during or after cancer treatment. This work might test whether SMIs improve the efficacy of protective vaccines in cancer survivors (e.g., Antoni et al. 2021).

Conditions associated with metabolic syndrome (i.e., dyslipidemia, hypertension, central obesity, and insulin resistance)—which represent major CVD risk factors—are often elevated in cancer survivors (Reis et al. 2020). The American Heart Association notes that CVD and associated risk factors (obesity and dyslipidemia) are increasing in breast cancer survivors (Mehta et al. 2018). Excessive weight is also associated with worse prognosis for breast cancer itself (Barone et al. 2021),

with pre- and postmenopausal overweight and obese women having a greater likelihood of recurrence and mortality (Chan et al. 2014, Protani et al. 2010) and of developing a secondary cancer in the unaffected breast or at a separate primary site (Majed et al. 2011); these effects are all believed to be mediated, in part, by heightened inflammatory signaling. Recent work suggests that brief SMIs reduced serum IL-6 levels in obese and overweight breast cancer patients undergoing initial treatment (Ream et al. 2022). Large-scale trials should test the efficacy of SMIs for optimizing longer-term cardiovascular health and other consequences of CAA via improved immune regulation in this vulnerable population of cancer survivors.

Extending the Reach of Research on Stress Management Interventions to Underserved Cancer Populations

A fourth area involves extending the reach of SMIs to the underserved through the use of culturally adapted interventions (Lechner et al. 2014, Penedo et al. 2018) and remote technologies (Penedo et al. 2020b). As in the case of health care more broadly, there exist huge and entrenched cultural, ethnic, and racial disparities in cancer morbidity and mortality rates (Miller et al. 2017). Our lack of knowledge about the impact of SMIs in disparate groups is likely due to deficits in the appropriateness and accessibility of evidence-based SMIs for cancer patients in ethnic and racial minorities and other marginalized groups without easy access to major cancer centers. Work that uses geo-epidemiological methods is identifying how entrenched features in the neighborhoods and living conditions of racial/ethnic minority cancer patients in the United States (i.e., structural racism; Bailey et al. 2021) appear linked to poorer breast cancer survival rates (Goel et al. 2022). How these structural or neighborhood-level factors can influence disease outcomes may be explained in part by excess exposure to chronic stressors (environmental and personal) as well as limited access to care (i.e., greater distance to a cancer center could result in later presentation and limited treatment options) and multiple behavioral pathways (lifestyle behaviors, poor adherence to medications, etc.). Some of these may operate on cancer progression and poor clinical outcomes through stress-related biobehavioral pathways. While SMIs may address some of these stress processes, they are likely to be beneficial to these populations only if interventions are culturally adapted in ways that make them acceptable to users and are delivered in ways that can be deployed on a wider scale.

Attending in-person SMIs may present challenges to specific cancer populations who navigate health care appointments while maintaining employment and child care responsibilities, to those hesitant to attend structured groups in institutional settings due to medical mistrust, or to patients isolated for infection control following procedures such as hematological stem cell transplant. All of these challenges may be exacerbated in patients with low-income jobs and who lack the financial resources for child care and time off work. Technological innovations make it now possible to offer interventions remotely over digital platforms and embedded within health systems and patient portals (Penedo et al. 2020b). Recently completed RCTs have shown that web-based CBSM platforms can improve psychological adaptation in men with prostate cancer (Penedo et al. 2020a, Yanez et al. 2015). The potential value for remote delivery solutions has been accelerated by the coronavirus disease 2019 (COVID-19) pandemic, which has hastened the development, acceptance, and integration of tele-medicine and tele-health into the medical treatment settings (Doraiswamy et al. 2020). This presents an opportunity and a challenge to swiftly establish the efficacy and relative effect size (versus in-person approaches) of remotely delivered psychological interventions for cancer patients in noninferiority trials. While these remote delivery venues are beginning to show effects on psychological adaptation in cancer patients, less is known about the ability of remotely delivered versions to recapitulate the effects of empirically validated

in-person SMIs on physiological adaptation and on long-term health outcomes in cancer patients as presented here. However, RCTs are underway to examine the impact of remote care on psychological and physiological adaptation in patients with breast cancer (Antoni et al. 2021) and prostate cancer (Penedo et al. 2018). Beyond these four major emerging areas of research, it is valuable to reflect on contextual factors and methodological challenges going forward.

The COVID-19 Pandemic as a Model of Contextual Stressors in the Lives of Cancer Patients and Survivors

Cancer patients and survivors have been disproportionately and significantly impacted by the COVID-19 pandemic. Emerging studies have documented that the COVID-19 pandemic has further exacerbated common challenges to psychosocial adaptation following a cancer diagnosis and treatment. In the absence of major contextual stressors, survivors experience relatively high rates of psychosocial (e.g., anxiety, depression, loss of employment, financial toxicity, social isolation, role strain) and physical (e.g., preexisting health conditions, fatigue, pain, sleep disruption) concerns due to cancer and its treatment. Furthermore, COVID-19 mitigation strategies leading to social isolation from friends and family, limited leisure activities, financial strain, and fears and concerns over the physical health status of an already compromised population synergistically contribute to greater levels of psychosocial distress in cancer survivors (Kuderer et al. 2020, McGinty et al. 2020, Nicola et al. 2020, U.S. Census Bur. 2021). COVID-19-related discontinuity in care and disruptions to ongoing and follow-up treatment can also have negative psychosocial and physical health outcomes among individuals who may already be experiencing care fragmentation and less-than-optimal follow-up and surveillance. In fact, cancer-specific and all-cause mortality may even be affected by COVID-19 experiences and stress via risk behaviors (e.g., lack of physical activity, changes in lifestyle behaviors including poor sleep and nutrition, and poor treatment adherence/follow-up) (Williamson et al. 2020). SMIs are ideally poised to address the contextual stressors presented by the pandemic and to provide cancer patients and survivors with the necessary stress management tools to effectively navigate the multiple challenges that can have a detrimental impact on health-related QoL and health outcomes.

Methodologic Challenges Going Forward

Multiple challenges remain in SMI research in cancer populations. Importantly, progress needs to be made in developing systems, methods, and incentives to identify and engage underrepresented populations, many of whom face extensive barriers to accessing health care, let alone research trials. These include individuals who are medically vulnerable, such as those who are older, are obese, or have significant comorbidities as well as individuals who are minoritized because of race, ethnicity, sexual orientation, gender identity, and so on. As described above, technology and cultural adaptation are two possible approaches to improving the reach of SMIs to diverse populations. Relatedly, more research is needed to optimize not only the timing of intervention (i.e., before, during, and after cancer treatment) but also the length, frequency, and delivery of intervention contact. Best practices for recruitment and retention of cancer patients and survivors in SMI research are also largely understudied. Importantly, innovative trial designs, such as just-in-time adaptive intervention (JITAI), multiphase optimization strategy (MOST), and sequential multiple assignment randomized trial (SMART) (Collins et al. 2007, Klasnja et al. 2015), as well as advancements in measurement and assessment such as computer adaptive tests (CATs) and ecological momentary assessments (EMAs), have the potential to generate novel findings that inform future SMI research.

CONCLUSION

With growing evidence for the efficacy of SMIs in cancer patients, future research questions will need to ask which, when, where, and for whom these interventions might be used optimally in clinical oncology settings (Antoni & Dhabhar 2019). The “which” question asks, among all of the psychological intervention approaches, which ones produce the largest effects on psychological and physiological adaptation and clinical health outcomes in cancer patients. Based upon recent meta-analyses, it appears that CBT-based SMI approaches are particularly effective, but more so in patients with earlier, nonmetastatic disease, in particular breast cancer (Mirosevic et al. 2019).

The “when” question asks at what point in the post-diagnosis cancer continuum should one intervene with SMIs. While there is growing evidence that these interventions can create changes in stress-related biobehavioral processes for periods up to 12 months in patients with early-stage nonmetastatic disease, it remains to be determined whether they are able to modulate these biobehavioral processes in patients with advanced cancers. Similarly, there are two SMI trials that have shown effects on long-term recurrence and survival in early-stage patients receiving intervention in the postsurgical period (Andersen et al. 2008, Stagl et al. 2015a). Given the established effects of surgery on stress-related biological processes, the peri-surgical period may be an important point to explore in further SMI trials with cancer patients (Eckerling et al. 2021). This could include recruiting patients just after biopsy-confirmed diagnosis, randomizing them to study conditions either prior to neoadjuvant therapy (which precedes surgery) or just prior to surgery (a period of heightened anxiety and stress) to test intervention effects on biobehavioral processes pre-/post-surgery, or recruiting patients after surgery and testing effects pre/post adjuvant therapy to see if early inoculation has lasting effects.

The “where” question concerns the setting for delivery of SMIs and it requires us to consider a variety of implementation issues. As we have noted, extended interventions requiring weekly group attendance over several months may not be practical within the context of primary oncology treatment, and ongoing trials are testing briefer forms and remote delivery platforms (using tablets and broadband connection) to determine if they show comparable effects to their longer and in-person versions. More work should also be conducted testing the effects of embedding SMIs (in-person or remotely delivered) into adjuvant therapy settings such as preparation for radiation treatment (simulation visits) and the chemotherapy infusion suite, where patients are attending multiple treatment sessions and are often isolated from their family and social support system (Biagioli et al. 2017, Mosher et al. 2012).

In terms of the “for whom” question, we need more information on which subgroups of patients are likely to benefit the most from SMIs. There is good evidence that patients with greater cancer-specific distress (Wang et al. 2018), pessimism (Antoni et al. 2001), and other forms of psychosocial adversity (Schneider et al. 2009) show the greatest effects of these interventions on psychological adaptation. However, there is no evidence that these host characteristics can predict SMI effects on physiological adaptation and long-term clinical health outcomes (Antoni & Dhabhar 2019). It is also important to uncover biomedical (e.g., tumor phenotype and immune system status) and sociodemographic factors that identify patients most likely to show psychological, physiological, and health benefits. Elsewhere it has been pointed out that it might also be helpful to test which host factors predict the strongest effects (and in the most cost-effective manner) of one SMI approach over another (e.g., relaxation versus CBT versus β -adrenergic blockade) (Antoni & Dhabhar 2019). As we learn about host factors that predict optimal SMI effects, we can make use of in-depth psychosocial screening with patient-reported outcomes and biomarker assessments to optimize patient triaging in the spirit of precision oncology care.

SUMMARY POINTS

The multiple stressors that cancer patients must manage, from the point of diagnosis and treatment decisions, through surgical and adjuvant treatments, and into survivorship, require a substantial amount of both psychological and physiological adaptation.

1. Stress exerts effects on multiple systems, including the sympathetic nervous system and the hypothalamic-pituitary-adrenal (HPA) axis, and it may affect immune processes relevant to the surveillance and progression of cancer (e.g., immune cell adhesion and trafficking, lymphocyte proliferation, macrophage responses, inflammation, angiogenesis, natural kill cell cytotoxicity).
2. Stress management interventions (SMIs) teach skills to help cancer patients and survivors manage and reduce stress and mitigate its deleterious impact on emotional well-being and health.
3. Cognitive behavioral stress management (CBSM) is an SMI that incorporates cognitive behavioral therapy (CBT) skills and relaxation techniques to improve quality of life and reduce symptoms. CBSM integrates core CBT principles and practices, such as cognitive restructuring, behavioral activation, and relaxation techniques like diaphragmatic breathing, progressive muscle relaxation, and meditation/imagery.
4. Randomized controlled trials in cancer survivors have demonstrated that CBT-based SMIs improve quality of life, social support, relaxation, coping skills, and benefit finding and reduce depressive symptoms, anxiety, and emotional distress. These interventions also mitigate stress-related biological changes during treatment, including reduced cortisol; decreased circulating inflammatory markers and reversal of leukocyte nuclear NF κ B binding and proinflammatory/prometastatic gene expression; and increased T-helper type 1 cytokine production, lymphocyte proliferation, and leukocyte interferon family gene expression. Finally, CBT-based SMIs have been associated with less depression and better quality of life as well as longer overall and disease-free survival up to 15 years after treatment, which is proportional to intervention-associated reductions in inflammatory signaling during and after initial cancer treatment.
5. With growing evidence that CBT-based SMIs can help cancer patients manage cancer-related stress and improve psychological and physiological adaptation and health outcomes, future research should focus on (a) the role that central nervous system processes play in SMIs, (b) the effects of pharmacologic interventions to directly modulate stress biology, (c) the effects of SMIs on long-term mental and physical health outcomes, and (d) how to extend the reach of SMIs to diverse and underserved populations.

FUTURE ISSUES

Issues that should be considered in future research include:

1. Increasing the inclusiveness and diversity of cancer populations studied in SMI research and development;
2. Examining the effects of SMIs on most vulnerable groups of patients and survivors (e.g., individuals who are obese, older, have cardiometabolic or other comorbidities);

3. Understanding the role of psychosocial and physiological adaptation processes in advanced cancers and developing novel SMIs to optimize quality of life and health outcomes;
4. Understanding how SMIs affect central nervous system (CNS) processes, neuroendocrine mediators, and changes in peripheral physiology, multiple microbiomes (e.g., gut-brain axis), and carcinogenic processes;
5. Examining how stress processes modulate the cancer–aging bidirectional loop and designing SMIs to slow cancer-accelerated aging from mind to cells;
6. Blending SMIs with health promotion interventions (physical activity, diet/nutrition, medication management) and pharmacologic interventions (β -blockers) in phased care during cancer treatment;
7. Developing and testing evidence-based SMIs that are specifically designed to be integrated before (prehab) and during cancer treatment;
8. Identifying determinants of risk in order to stratify cancer patients and survivors by risk profile to personalize/individualize care (consistent with the precision medicine movement);
9. Leveraging technology (electronic health records, virtual reality, gamification) to identify cancer patients and survivors and effectively deploy SMIs; and
10. Optimizing research–private sector partnerships to implement SMIs into cancer centers as exemplars of sustainable health care.

DISCLOSURE STATEMENT

M.H.A. is a paid consultant for Blue Note Therapeutics and Atlantis Healthcare, two digital health software companies specializing in developing psychosocial interventions for medical patients. F.J.P. is a paid consultant for Blue Note Therapeutics. M.H.A. and F.J.P. are co-inventors of cognitive behavioral stress management (CBSM), which is licensed to Blue Note Therapeutics. The authors are not aware of any other affiliations, memberships, funding, or financial holdings that might be perceived as affecting the objectivity of this review.

ACKNOWLEDGMENTS

This project was supported in part by National Institutes of Health (NIH) grants 1P30CA240139-01, 7R01CA206456-01A1, R01CA206456-03S1, UG3CA260317, R37CA255875, R01CA196953, and Sylvester Comprehensive Cancer Center Bridge Grant PG013720 to M.H.A.; grant K01CA258955 to P.I.M.; and grants 1P30CA240139-01, 7R01CA206456-01A1, R01CA206456-03S1, UG3 CA260317, R01CA196953, and R37CA255875 to F.J.P. The content is solely the responsibility of the authors and does not necessarily represent the official views of the NIH.

LITERATURE CITED

Addison S, Shirima D, Aboagye-Mensah EB, Dunovan SG, Pascal EY, et al. 2022. Effects of tandem cognitive behavioral therapy and healthy lifestyle interventions on health-related outcomes in cancer survivors: a systematic review. *J. Cancer Surviv.* 16:1023–46

- Algoe SB, Stanton AL. 2009. Is benefit finding good for individuals with chronic disease? In *Medical Illness and Positive Life Change: Can Crisis Lead to Personal Transformation?* ed. CL Park, SC Lechner, MH Antoni, AL Stanton, pp. 173–93. Washington, DC: Am. Psychol. Assoc.
- Am. Cancer Soc. 2020a. How treatment is planned and scheduled. *American Cancer Society*. <https://www.cancer.org/treatment/treatments-and-side-effects/planning-managing/planning-scheduling-treatment.html>
- Am. Cancer Soc. 2020b. Understanding advanced and metastatic cancer. *American Cancer Society*. <https://www.cancer.org/treatment/understanding-your-diagnosis/advanced-cancer/what-is.html>
- Am. Soc. Clin. Oncol. 2019. Long-term side effects of cancer treatment. *Cancer.Net*. <https://www.cancer.net/survivorship/long-term-side-effects-cancer-treatment>
- Andersen BL, Farrar WB, Golden-Kreutz D, Emery CF, Glaser R, et al. 2007a. Distress reduction from a psychological intervention contributes to improved health for cancer patients. *Brain Behav. Immun.* 21(7):953–61
- Andersen BL, Farrar WB, Golden-Kreutz DM, Glaser R, Emery CF, et al. 2004. Psychological, behavioral, and immune changes after a psychological intervention: a clinical trial. *J. Clin. Oncol.* 22(17):3570–80
- Andersen BL, Farrar WB, Golden-Kreutz D, Kutz LA, MacCallum R, et al. 1998. Stress and immune responses after surgical treatment for regional breast cancer. *J. Natl. Cancer Inst.* 90(1):30–36
- Andersen BL, Shelby RA, Golden-Kreutz DM. 2007b. RCT of a psychological intervention for patients with cancer: I. Mechanisms of change. *J. Consult. Clin. Psychol.* 75(6):927–38
- Andersen BL, Thornton LM, Shapiro CL, Farrar WB, Mundy BL, et al. 2010. Biobehavioral, immune, and health benefits following recurrence for psychological intervention participants. *Clin. Cancer Res.* 16(12):3270–78
- Andersen BL, Yang H-C, Farrar WB, Golden-Kreutz DM, Emery CF, et al. 2008. Psychologic intervention improves survival for breast cancer patients: a randomized clinical trial. *Cancer* 113(12):3450–58
- Antoni MH. 2003a. *Stress Management Intervention for Women with Breast Cancer: Training Manual*. Washington, DC: Am. Psychol. Assoc. 1st ed.
- Antoni MH. 2003b. *Stress Management Intervention for Women with Breast Cancer: Training Manual & Participant's Workbook*. Washington, DC: Am. Psychol. Assoc.
- Antoni MH. 2013. Psychosocial intervention effects on adaptation, disease course and biobehavioral processes in cancer. *Brain Behav. Immun.* 30(Suppl.):S88–98
- Antoni MH, Bouchard LC, Jacobs JM, Lechner SC, Jutagir DR, et al. 2016. Stress management, leukocyte transcriptional changes and breast cancer recurrence in a randomized trial: an exploratory analysis. *Psychoneuroendocrinology* 74:269–77
- Antoni MH, Dhabhar FS. 2019. Impact of psychosocial stress and stress management on immune responses in cancer patients. *Cancer* 125(9):1417–31
- Antoni MH, Jacobs JM, Bouchard LC, Lechner SC, Jutagir DR, et al. 2017. Post-surgical depressive symptoms and long-term survival in non-metastatic breast cancer patients at 11-year follow-up. *Gen. Hosp. Psychiatry* 44:16–21
- Antoni MH, Lechner S, Diaz A, Vargas S, Holley H, et al. 2009. Cognitive behavioral stress management effects on psychosocial and physiological adaptation in women undergoing treatment for breast cancer. *Brain Behav. Immun.* 23(5):580–91
- Antoni MH, Lechner SC, Kazi A, Wimberly SR, Sifre T, et al. 2006a. How stress management improves quality of life after treatment for breast cancer. *J. Consult. Clin. Psychol.* 74(6):1143–52
- Antoni MH, Lehman JM, Kilbourn KM, Boyers AE, Culver JL, et al. 2001. Cognitive behavioral stress management intervention decreases the prevalence of depression and enhances benefit finding among women under treatment for early-stage breast cancer. *Health Psychol.* 20(1):20–32
- Antoni MH, Lutgendorf SK, Blomberg B, Carver CS, Lechner S, et al. 2012. Cognitive behavioral stress management reverses anxiety-related leukocyte transcriptional dynamics. *Biol. Psychiatry* 71(4):366–72
- Antoni MH, Lutgendorf SK, Cole SW, Dhabhar FS, Sephton SE, et al. 2006b. The influence of bio-behavioural factors on tumour biology: pathways and mechanisms. *Nat. Rev. Cancer* 6(3):240–48
- Antoni MH, Taub CJ, Ream M, Fisher HM, Nahin ER, et al. 2021. Video-conferenced Stress Management and Relaxation Training (VSMART) for older women undergoing treatment for breast cancer. *Int. J. Behav. Med.* 28(Suppl. 1):S71

- Antoni MH, Wimberly SR, Lechner SC, Kazi A, Sifre T, et al. 2006c. Reduction of cancer-specific thought intrusions and anxiety symptoms with a stress management intervention among women undergoing treatment for breast cancer. *Am. J. Psychiatry* 163(10):1791–97
- Armes J, Crowe M, Colbourne L, Morgan H, Murrells T, et al. 2009. Patients' supportive care needs beyond the end of cancer treatment: a prospective, longitudinal survey. *J. Clin. Oncol.* 27(36):6172–79
- Bailey ZD, Feldman JM, Bassett MT. 2021. How structural racism works: racist policies as a root cause of U.S. racial health inequities. *N. Engl. J. Med.* 384(8):768–73
- Barone I, Caruso A, Gelsomino L, Giordano C, Bonofiglio D, et al. 2021. Obesity and endocrine therapy resistance in breast cancer: mechanistic insights and perspectives. *Obes. Rev.* 23(2):e13358
- Basch E, Jia X, Heller G, Barz A, Sit L, et al. 2009. Adverse symptom event reporting by patients versus clinicians: relationships with clinical outcomes. *J. Natl. Cancer Inst.* 101(23):1624–32
- Baum JM, Troxel A, Epperson CN, Cohen RB, Schmitz K, et al. 2016. Scan-associated distress in lung cancer: quantifying the impact of “scanxiety.” *Lung Cancer* 100:110–13
- Bennett G, Badger T. 2005. Depression in men with prostate cancer. *Oncol. Nurs. Forum* 32:545–56
- Biagioli V, Piredda M, Annibali O, Iacorossi L, D'Angelo D, et al. 2017. Being in protective isolation following autologous haematopoietic stem cell transplantation: a phenomenological study. *J. Clin. Nurs.* 26(23–24):4467–78
- Blomberg B, Alvarez J, Diaz A, Romero M, Lechner S, et al. 2009. Psychosocial adaptation and cellular immunity in breast cancer patients in the weeks after surgery: an exploratory study. *J. Psychosom. Res.* 67:369–76
- Boesen EH, Karlsen R, Christensen J, Paaschburg B, Nielsen D, et al. 2011. Psychosocial group intervention for patients with primary breast cancer: a randomised trial. *Eur. J. Cancer* 47(9):1363–72
- Bouchard LC, Antoni MH, Blomberg BB, Stagl JM, Gudenkauf LM, et al. 2016. Postsurgical depressive symptoms and proinflammatory cytokine elevations in women undergoing primary treatment for breast cancer. *Psychosom. Med.* 78(1):26–37
- Bower JE, Ganz PA, Irwin MR, Kwan L, Breen EC, Cole SW. 2011. Inflammation and behavioral symptoms after breast cancer treatment: Do fatigue, depression, and sleep disturbance share a common underlying mechanism? *J. Clin. Oncol.* 29(26):3517–22
- Breitbart WS, Butow PN, Jacobsen PB, Lam WWT, Lazenby M, Loscalzo MJ, eds. 2021. *Psycho-Oncology*. New York: Oxford Univ. Press. 4th ed.
- Bui KT, Liang R, Kiely BE, Brown C, Dhillon HM, Blinman P. 2021. Scanxiety: a scoping review about scan-associated anxiety. *BMJ Open* 11(5):e043215
- Carlson L. 2023. Psychosocial and integrative oncology: interventions across the disease trajectory. *Annu. Rev. Psychol.* 74:457–87
- Carrera PM, Kantarjian HM, Blinder VS. 2018. The financial burden and distress of patients with cancer: understanding and stepping-up action on the financial toxicity of cancer treatment. *CA Cancer J. Clin.* 68(2):153–65
- Casellas-Grau A, Ochoa C, Ruini C. 2017. Psychological and clinical correlates of posttraumatic growth in cancer: a systematic and critical review. *Psychooncology* 26(12):2007–18
- Chan DSM, Vieira AR, Aune D, Bandera EV, Greenwood DC, et al. 2014. Body mass index and survival in women with breast cancer—systematic literature review and meta-analysis of 82 follow-up studies. *Ann. Oncol.* 25(10):1901–14
- Chang A, Sloan EK, Antoni MH, Knight JM, Telles R, Lutgendorf S. 2022. Biobehavioral pathways and cancer progression. *Integr. Cancer Ther.* 21:15347354221096081
- Chida Y, Hamer M, Wardle J, Steptoe A. 2008. Do stress-related psychosocial factors contribute to cancer incidence and survival? *Nat. Clin. Pract. Oncol.* 5(8):466–75
- Chino F, Peppercorn JM, Rushing C, Kamal AH, Altomare I, et al. 2017. Out-of-pocket costs, financial distress, and underinsurance in cancer care. *JAMA Oncol.* 3(11):1582–84
- Citrome L. 2008. Compelling or irrelevant? Using number needed to treat can help decide. *Acta Psychiatr. Scand.* 117(6):412–19
- Cobeanu O, David D. 2018. Alleviation of side effects and distress in breast cancer patients by cognitive-behavioral interventions: a systematic review and meta-analysis. *J. Clin. Psychol. Med. Settings* 25(4):335–55

- Cohen L, Cole S, Sood A, Prinsloo S, Kirschbaum C, et al. 2012. Depressive symptoms and cortisol rhythmicity predict survival in patients with renal cell carcinoma: role of inflammatory signaling. *PLOS ONE* 7:e42324
- Cole SW, Nagaraja AS, Lutgendorf SK, Green PA, Sood AK. 2015. Sympathetic nervous system regulation of the tumour microenvironment. *Nat. Rev. Cancer* 15(9):563–72
- Collins LM, Murphy SA, Strecher V. 2007. The multiphase optimization strategy (MOST) and the sequential multiple assignment randomized trial (SMART): new methods for more potent eHealth interventions. *Am. J. Prev. Med.* 32(5 Suppl.):S112–18
- Cruess DG, Antoni MH, McGregor BA, Kilbourn KM, Boyers AE, et al. 2000. Cognitive behavioral stress management reduces serum cortisol by enhancing benefit finding among women being treated for early stage breast cancer. *Psychosom. Med.* 62(3):304–8
- Custers JAE, Davis L, Messiou C, Prins JB, van der Graaf WTA. 2021. The patient perspective in the era of personalized medicine: what about scanxiety? *Cancer Med.* 10(9):2943–45
- Demoor-Goldschmidt C, de Vathaire F. 2019. Review of risk factors of secondary cancers among cancer survivors. *Br. J. Radiol.* 92(1093):20180390
- Diaz A, Taub CJ, Lippman ME, Antoni MH, Blomberg BB. 2021. Effects of brief stress management interventions on distress and leukocyte nuclear factor kappa B expression during primary treatment for breast cancer: a randomized trial. *Psychoneuroendocrinology* 126:105163
- Dignani MC, Costantini P, Salgueira C, Jordán R, Guerrini G, et al. 2014. Pandemic 2009 Influenza A (H1N1) virus infection in cancer and hematopoietic stem cell transplant recipients; a multicenter observational study. *F1000Res.* 3:221
- Dobson KS, Dozois DJA. 2010. Historical and philosophical bases of the cognitive-behavioral therapies. In *Handbook of Cognitive-Behavioral Therapies*, ed. KS Dobson, pp. 3–38. New York: Guilford. 3rd ed.
- Doraiswamy S, Abraham A, Mamtani R, Cheema S. 2020. Use of telehealth during the COVID-19 pandemic: scoping review. *J. Med. Internet Res.* 22(12):e24087
- Dunn J, Watson M, Aitken JF, Hyde MK. 2017. Systematic review of psychosocial outcomes for patients with advanced melanoma. *Psychooncology* 26(11):1722–31
- Eckerling A, Ricon-Becker I, Sorski L, Sandbank E, Ben-Eliyahu S. 2021. Stress and cancer: mechanisms, significance and future directions. *Nat. Rev. Cancer* 21(12):767–85
- Falcinelli M, Thaker PH, Lutgendorf SK, Conzen SD, Flaherty RL, Flint MS. 2021. The role of psychological stress in cancer initiation: clinical relevance and potential molecular mechanisms. *Cancer Res.* 81(20):5131–40
- Fawzy FI, Canada AL, Fawzy NW. 2003. Malignant melanoma: effects of a brief, structured psychiatric intervention on survival and recurrence at 10-year follow-up. *Arch. Gen. Psychiatry* 60(1):100–3
- Fawzy FI, Cousins N, Fawzy NW, Kemeny ME, Elashoff R, Morton D. 1990a. A structured psychiatric intervention for cancer patients: I. Changes over time in methods of coping and affective disturbance. *Arch. Gen. Psychiatry* 47(8):720–25
- Fawzy FI, Fawzy NW, Hyun CS, Elashoff R, Guthrie D, et al. 1993. Malignant melanoma: effects of an early structured psychiatric intervention, coping, and affective state on recurrence and survival 6 years later. *Arch. Gen. Psychiatry* 50(9):681–89
- Fawzy FI, Kemeny ME, Fawzy NW, Elashoff R, Morton D, et al. 1990b. A structured psychiatric intervention for cancer patients: II. Changes over time in immunological measures. *Arch. Gen. Psychiatry* 47(8):729–35
- Fredrickson BL, Grewen KM, Coffey KA, Algoe SB, Firestone AM, et al. 2013. A functional genomic perspective on human well-being. *PNAS* 110(33):13684–89
- Ganz PA. 2001. Late effects of cancer and its treatment. *Semin. Oncol. Nurs.* 17(4):241–48
- Getu MA, Chen C, Panpan W, Mboineki JF, Dhakal K, Du R. 2021. The effect of cognitive behavioral therapy on the quality of life of breast cancer patients: a systematic review and meta-analysis of randomized controlled trials. *Qual. Life Res.* 30(2):367–84
- Giese-Davis J, Collie K, Rancourt KMS, Neri E, Kraemer HC, Spiegel D. 2011. Decrease in depression symptoms is associated with longer survival in patients with metastatic breast cancer: a secondary analysis. *J. Clin. Oncol.* 29(4):413–20
- Goel N, Westrick AC, Bailey ZD, Hernandez A, Balise RR, et al. 2022. Structural racism and breast cancer-specific survival: impact of economic and racial residential segregation. *Ann. Surg.* 275(4):776–83

- Goodwin PJ, Leszcz M, Ennis M, Koopmans J, Vincent L, et al. 2001. The effect of group psychosocial support on survival in metastatic breast cancer. *N. Engl. J. Med.* 345(24):1719–26
- Gudenkauf LM, Antoni MH, Stagl JM, Lechner SC, Jutagir DR, et al. 2015. Brief cognitive behavioral and relaxation training interventions for breast cancer: a randomized controlled trial. *J. Consult. Clin. Psychol.* 83(4):677–88
- Guida JL, Ahles TA, Belsky D, Campisi J, Cohen HJ, et al. 2019. Measuring aging and identifying aging phenotypes in cancer survivors. *J. Natl. Cancer Inst.* 111(12):1245–54
- Harrison JD, Young JM, Price MA, Butow PN, Solomon MJ. 2009. What are the unmet supportive care needs of people with cancer? A systematic review. *Support. Care Cancer* 17(8):1117–28
- Hart SL, Hoyt MA, Diefenbach M, Anderson DR, Kilbourn KM, et al. 2012. Meta-analysis of efficacy of interventions for elevated depressive symptoms in adults diagnosed with cancer. *J. Natl. Cancer Inst.* 104(13):990–1004
- Helgeson VS, Reynolds KA, Tomich PL. 2006. A meta-analytic review of benefit finding and growth. *J. Consult. Clin. Psychol.* 74(5):797–816
- Henoch I, Danielson E. 2009. Existential concerns among patients with cancer and interventions to meet them: an integrative literature review. *Psychooncology* 18(3):225–36
- Heron-Speirs HA, Harvey ST, Baken DM. 2012. Moderators of psycho-oncology therapy effectiveness: addressing design variable confounds in meta-analysis. *Clin. Psychol. Sci. Pract.* 19(1):49–71
- Hofmann SG, Asnaani A, Vonk IJJ, Sawyer AT, Fang A. 2012. The efficacy of cognitive behavioral therapy: a review of meta-analyses. *Cogn. Ther. Res.* 36(5):427–40
- Huang D, Su S, Cui X, Shen X, Zeng Y, et al. 2014. Nerve fibers in breast cancer tissues indicate aggressive tumor progression. *Medicine* 93(27):e172
- Jacobsen PB, Andrykowski MA. 2015. Tertiary prevention in cancer care: understanding and addressing the psychological dimensions of cancer during the active treatment period. *Am. Psychol.* 70(2):134–45
- Jim HSL, Jacobsen PB. 2008. Posttraumatic stress and posttraumatic growth in cancer survivorship: a review. *Cancer J.* 14(6):414–19
- Johnson JA, Rash JA, Campbell TS, Savard J, Gehrman PR, et al. 2016. A systematic review and meta-analysis of randomized controlled trials of cognitive behavior therapy for insomnia (CBT-I) in cancer survivors. *Sleep Med. Rev.* 27:20–28
- Jutagir DR, Blomberg BB, Carver CS, Lechner SC, Timpano KR, et al. 2017. Social well-being is associated with less pro-inflammatory and pro-metastatic leukocyte gene expression in women after surgery for breast cancer. *Breast Cancer Res. Treat.* 165(1):169–80
- Kent EE, Ambs A, Mitchell SA, Clauser SB, Smith AW, Hays RD. 2015. Health-related quality of life in older adult survivors of selected cancers: data from the SEER-MHOS linkage. *Cancer* 121(5):758–65
- Key RG, Liebling D, Malhotra VT, Passik SD, Moryl N, Breitbart WS. 2021. Cancer-related pain. In *Psycho-Oncology*, ed. W Breitbart, P Butow, P Jacobsen, W Lam, M Lazenby, M Loscalzo, pp. 235–54. New York: Oxford Univ. Press. 4th ed.
- Kissane DW, Grabsch B, Clarke DM, Smith GC, Love AW, et al. 2007. Supportive-expressive group therapy for women with metastatic breast cancer: survival and psychosocial outcome from a randomized controlled trial. *Psychooncology* 16(4):277–86
- Klasanja P, Hekler EB, Shiffman S, Boruvka A, Almirall D, et al. 2015. Micro-randomized trials: an experimental design for developing just-in-time adaptive interventions. *Health Psychol.* 34:1220–28
- Knight JM, Rizzo JD, Logan BR, Wang T, Arevalo JMG, et al. 2016. Low socioeconomic status, adverse gene expression profiles, and clinical outcomes in hematopoietic stem cell transplant recipients. *Clin. Cancer Res.* 22(1):69–78
- Koch L, Jansen L, Brenner H, Arndt V. 2013. Fear of recurrence and disease progression in long-term (≥ 5 years) cancer survivors—a systematic review of quantitative studies. *Psychooncology* 22(1):1–11
- Kuderer NM, Choueiri TK, Shah DP, Shyr Y, Rubinstein SM, et al. 2020. Clinical impact of COVID-19 on patients with cancer (CCC19): a cohort study. *Lancet* 395(10241):1907–18
- Kwak T, Drews-Elger K, Ergonul A, Miller PC, Braley A, et al. 2017. Targeting of RAGE-ligand signaling impairs breast cancer cell invasion and metastasis. *Oncogene* 36(11):1559–72
- Langbaum T, Smith TJ. 2019. Time to study metastatic-cancer survivorship. *N. Engl. J. Med.* 380(14):1300–2

- Lechner SC, Whitehead NE, Vargas S, Annane DW, Robertson BR, et al. 2014. Does a community-based stress management intervention affect psychological adaptation among underserved black breast cancer survivors? *J. Natl. Cancer Inst. Monogr.* 2014(50):315–22
- Lee V, Loiselle CG. 2012. The salience of existential concerns across the cancer control continuum. *Palliat. Support. Care* 10(2):123–33
- Lentz R, Benson AB III, Kircher S. 2019. Financial toxicity in cancer care: prevalence, causes, consequences, and reduction strategies. *J. Surg. Oncol.* 120(1):85–92
- Levy S, Herberman R, Lippman M, d'Angelo T. 1987. Correlation of stress factors with sustained depression of natural killer cell activity and predicted prognosis in patients with breast cancer. *J. Clin. Oncol.* 5(3):348–53
- Lintz K, Moynihan C, Steginga S, Norman A, Eeles R, et al. 2003. Prostate cancer patients' support and psychological care needs: survey from a non-surgical oncology clinic. *Psychooncology* 12(8):769–83
- Lutgendorf SK, De Geest K, Bender D, Ahmed A, Goodheart MJ, et al. 2012. Social influences on clinical outcomes of patients with ovarian cancer. *J. Clin. Oncol.* 30(23):2885–90
- Lutgendorf SK, Sood AK, Antoni MH. 2010. Host factors and cancer progression: biobehavioral signaling pathways and interventions. *J. Clin. Oncol.* 28(26):4094–99
- Majed B, Dozol A, Ribassin-Majed L, Senouci K, Asselain B. 2011. Increased risk of contralateral breast cancers among overweight and obese women: a time-dependent association. *Breast Cancer Res. Treat.* 126(3):729–38
- McEwen BS. 2002. Sex, stress and the hippocampus: allostasis, allostatic load and the aging process. *Neurobiol. Aging* 23(5):921–39
- McFarland DC, Bjerre-Real C, Alici Y, Breitbart WS. 2021. Cancer-related fatigue. In *Psycho-Oncology*, ed. W Breitbart, P Butow, P Jacobsen, W Lam, M Lazenby, M Loscalzo, pp. 265–75. New York: Oxford Univ. Press. 4th ed.
- McGinty EE, Presskreischer R, Han H, Barry CL. 2020. Psychological distress and loneliness reported by US adults in 2018 and April 2020. *JAMA* 324(1):93–94
- McGregor BA, Antoni MH. 2009. Psychological intervention and health outcomes among women treated for breast cancer: a review of stress pathways and biological mediators. *Brain Behav. Immun.* 23(2):159–66
- McGregor BA, Antoni MH, Boyers A, Alferi SM, Blomberg BB, Carver CS. 2004. Cognitive behavioral stress management increases benefit finding and immune function among women with early-stage breast cancer. *J. Psychosom. Res.* 56(1):1–8
- McNeely ML, Campbell KL, Rowe BH, Klassen TP, Mackey JR, Courneya KS. 2006. Effects of exercise on breast cancer patients and survivors: a systematic review and meta-analysis. *Can. Med. Assoc. J.* 175(1):34–41
- Mehta LS, Watson KE, Barac A, Beckie TM, Bittner V, et al. 2018. Cardiovascular disease and breast cancer: where these entities intersect. A scientific statement from the American Heart Association. *Circulation* 137(8):e30–66
- Miller GE, Chen E, Fok AK, Walker H, Lim A, et al. 2009. Low early-life social class leaves a biological residue manifested by decreased glucocorticoid and increased proinflammatory signaling. *PNAS* 106(34):14716–21
- Miller GE, Chen E, Sze J, Marin T, Arevalo JMG, et al. 2008. A functional genomic fingerprint of chronic stress in humans: blunted glucocorticoid and increased NF- κ B signaling. *Biol. Psychiatry* 64(4):266–72
- Miller JW, Smith JL, Ryerson AB, Tucker TC, Allemani C. 2017. Disparities in breast cancer survival in the United States (2001–2009): findings from the CONCORD-2 study. *Cancer* 123(S24):5100–18
- Miller KD, Nogueira L, Mariotto AB, Rowland JH, Yabroff KR, et al. 2019. Cancer treatment and survivorship statistics, 2019. *CA Cancer J. Clin.* 69(5):363–85
- Mirosevic S, Jo B, Kraemer HC, Ershadi M, Neri E, Spiegel D. 2019. “Not just another meta-analysis”: sources of heterogeneity in psychosocial treatment effect on cancer survival. *Cancer Med.* 8(1):363–73
- Mitchell AJ, Chan M, Bhatti H, Halton M, Grassi L, et al. 2011. Prevalence of depression, anxiety, and adjustment disorder in oncological, haematological, and palliative-care settings: a meta-analysis of 94 interview-based studies. *Lancet Oncol.* 12(2):160–74

- Molton IR, Siegel SD, Penedo FJ, Dahn JR, Kinsinger D, et al. 2008. Promoting recovery of sexual functioning after radical prostatectomy with group-based stress management: the role of interpersonal sensitivity. *J. Psychosom. Res.* 64(5):527–36
- Moreno PI, Stanton AL. 2013. Personal growth during the experience of advanced cancer: a systematic review. *Cancer J.* 19(5):421–30
- Mosher CE, Lepore SJ, Wu L, Austin J, Valdimarsdottir H, et al. 2012. Social correlates of distress following hematopoietic stem cell transplantation: exploring the role of loneliness and cognitive processing. *J. Health Psychol.* 17(7):1022–32
- Mravec B, Tibensky M, Horvathova L. 2020. Stress and cancer. Part I: mechanisms mediating the effect of stressors on cancer. *J. Neuroimmunol.* 346:577311
- Nicola M, Alsafi Z, Sohrabi C, Kerwan A, Al-Jabir A, et al. 2020. The socio-economic implications of the coronavirus pandemic (COVID-19): a review. *Int. J. Surg.* 78:185–93
- Oh PJ, Shin SR, Ahn HS, Kim HJ. 2016. Meta-analysis of psychosocial interventions on survival time in patients with cancer. *Psychol. Health* 31(4):396–419
- Osborn RL, Demoncada AC, Feuerstein M. 2006. Psychosocial interventions for depression, anxiety, and quality of life in cancer survivors: meta-analyses. *Int. J. Psychiatry Med.* 36(1):13–34
- O'Toole MS, Zachariae R, Renna ME, Mennin DS, Applebaum A. 2017. Cognitive behavioral therapies for informal caregivers of patients with cancer and cancer survivors: a systematic review and meta-analysis. *Psychooncology* 26(4):428–37
- Park CL, Edmondson D, Fenster JR, Blank TO. 2008. Meaning making and psychological adjustment following cancer: the mediating roles of growth, life meaning, and restored just-world beliefs. *J. Consult. Clin. Psychol.* 76(5):863–75
- Pearman TP, Beaumont JL, Mroczek D, O'Connor M, Cella D. 2018. Validity and usefulness of a single-item measure of patient-reported bother from side effects of cancer therapy. *Cancer* 124(5):991–97
- Penedo FJ, Antoni MH, Moreno PI, Traeger L, Perdomo D, et al. 2018. Study design and protocol for a culturally adapted cognitive behavioral stress and self-management intervention for localized prostate cancer: the Encuentros de Salud study. *Contemp. Clin. Trials* 71:173–80
- Penedo FJ, Antoni MH, Schneiderman N. 2008. *Cognitive-Behavioral Stress Management for Prostate Cancer Recovery: Facilitator Guide*. Oxford, UK: Oxford Univ. Press
- Penedo FJ, Dahn JR, Molton I, Gonzalez JS, Kinsinger D, et al. 2004. Cognitive behavioral stress management improves stress-management skills and quality of life in men recovering from treatment of prostate carcinoma. *Cancer* 100(1):192–200
- Penedo FJ, Fox RS, Oswald LB, Moreno PI, Boland CL, et al. 2020a. Technology-based psychosocial intervention to improve quality of life and reduce symptom burden in men with advanced prostate cancer: results from a randomized controlled trial. *Int. J. Behav. Med.* 27(5):490–505
- Penedo FJ, Molton I, Dahn JR, Shen B-J, Kinsinger D, et al. 2006. A randomized clinical trial of group-based cognitive behavioral stress management in localized prostate cancer: Development of stress management skills improves quality of life and benefit finding. *Ann. Behav. Med.* 31(3):261–70
- Penedo FJ, Oswald LB, Kronenfeld JP, Garcia SF, Cella D, Yanez B. 2020b. The increasing value of eHealth in the delivery of patient-centred cancer care. *Lancet Oncol.* 21(5):e240–51
- Penedo FJ, Traeger L, Dahn J, Molton I, Gonzalez JS, et al. 2007. Cognitive behavioral stress management intervention improves quality of life in Spanish monolingual Hispanic men treated for localized prostate cancer: results of a randomized controlled trial. *Int. J. Behav. Med.* 14(3):164–72
- Perego M, Tyurin VA, Tyurina YY, Yellets J, Nacarelli T, et al. 2020. Reactivation of dormant tumor cells by modified lipids derived from stress-activated neutrophils. *Sci. Transl. Med.* 12(572):eabb5817
- Phillips K, Antoni M, Carver C, Lechner S, Penedo F, et al. 2011. Stress management skills and reductions in serum cortisol across the year after surgery for non-metastatic breast cancer. *Cogn. Ther. Res.* 35:595–600
- Phillips KM, Antoni MH, Lechner SC, Blomberg BB, Llabre MM, et al. 2008. Stress management intervention reduces serum cortisol and increases relaxation during treatment for nonmetastatic breast cancer. *Psychosom. Med.* 70(9):1044–49
- Powell ND, Sloan EK, Bailey MT, Arevalo JMG, Miller GE, et al. 2013. Social stress up-regulates inflammatory gene expression in the leukocyte transcriptome via β -adrenergic induction of myelopoiesis. *PNAS* 110(41):16574–79

- Protani M, Coory M, Martin JH. 2010. Effect of obesity on survival of women with breast cancer: systematic review and meta-analysis. *Breast Cancer Res. Treat.* 123(3):627–35
- Rajandram RK, Jenewein J, McGrath C, Zwahlen RA. 2011. Coping processes relevant to posttraumatic growth: an evidence-based review. *Support. Care Cancer* 19(5):583–89
- Ream M, Saez-Clarke E, Taub CJ, Diaz A, Frasca D, et al. 2022. Brief post-surgical stress management reduces pro-inflammatory cytokines in overweight and obese breast cancer patients undergoing primary treatment. *Front. Biosci.* 27(5):148
- Reis JC, Antoni MH, Travado L. 2020. Emotional distress, brain functioning, and biobehavioral processes in cancer patients: a neuroimaging review and future directions. *CNS Spectr.* 25(1):79–100
- Savard J, Simard S, Ivers H, Morin CM. 2005. Randomized study on the efficacy of cognitive behavioral therapy for insomnia secondary to breast cancer, part I: sleep and psychological effects. *J. Clin. Oncol.* 23(25):6083–96
- Schneider S, Moyer A, Knapp-Oliver S, Sohl S, Cannella D, Targhetta V. 2009. Pre-intervention distress moderates the efficacy of psychosocial treatment for cancer patients: a meta-analysis. *J. Behav. Med.* 33:1–14
- Selye H. 1956. *The Stress of Life*. New York: McGraw-Hill
- Sephton SE, Lush E, Dedert EA, Floyd AR, Rebholz WN, et al. 2013. Diurnal cortisol rhythm as a predictor of lung cancer survival. *Brain Behav. Immun.* 30:S163–70
- Sephton SE, Sapolsky RM, Kraemer HC, Spiegel D. 2000. Early mortality in metastatic breast cancer patients absent of abnormal diurnal cortisol rhythms. *J. Natl. Cancer Inst.* 92:994–1000
- Sheard T, Maguire P. 1999. The effect of psychological interventions on anxiety and depression in cancer patients: results of two meta-analyses. *Br. J. Cancer* 80(11):1770–80
- Shehata MA, Karim NA. 2014. Influenza vaccination in cancer patients undergoing systemic therapy. *Clin. Med. Insights Oncol.* 8:57–64
- Sheinfeld Gorin S, Krebs P, Badr H, Janke EA, Jim HSL, et al. 2012. Meta-analysis of psychosocial interventions to reduce pain in patients with cancer. *J. Clin. Oncol.* 30(5):539–47
- Simard S, Thewes B, Humphris G, Dixon M, Hayden C, et al. 2013. Fear of cancer recurrence in adult cancer survivors: a systematic review of quantitative studies. *J. Cancer Surviv.* 7(3):300–22
- Singer S. 2018. Psychosocial impact of cancer. In *Psycho-Oncology*, ed. U Goerling, A Mehnert, pp. 1–11. Cham, Switz.: Springer
- Slavich GM, Cole SW. 2013. The emerging field of human social genomics. *Clin. Psychol. Sci.* 1(3):331–48
- Sloan EK, Priceman SJ, Cox BF, Yu S, Pimentel MA, et al. 2010. Sympathetic nervous system induces a metastatic switch in primary breast cancer. *Cancer Res.* 70(18):7042–52
- Spiegel D, Butler LD, Giese-Davis J, Koopman C, Miller E, et al. 2007. Effects of supportive expressive group therapy on survival of patients with metastatic breast cancer. *Cancer* 110(5):1130–38
- Spiegel D, Kraemer H, Bloom J, Gottheil E. 1989. Effect of psychosocial treatment on survival of patients with metastatic cancer. *Lancet* 334(8668):888–91
- Stagl JM, Bouchard LC, Lechner SC, Blomberg BB, Gudenkauf LM, et al. 2015a. Long-term psychological benefits of cognitive behavioral stress management for women with breast cancer: 11-year follow-up of a randomized controlled trial. *Cancer* 121(11):1873–81
- Stagl JM, Lechner SC, Carver CS, Bouchard LC, Gudenkauf LM, et al. 2015b. A randomized controlled trial of cognitive behavioral stress management in breast cancer: survival and recurrence at 11-year follow-up. *Breast Cancer Res. Treat.* 154(2):319–28
- Stanton AL. 2005. How and for whom? Asking questions about the utility of psychosocial interventions for individuals diagnosed with cancer. *J. Clin. Oncol.* 23(22):4818–20
- Stanton AL. 2006. Psychosocial concerns and interventions for cancer survivors. *J. Clin. Oncol.* 24(32):5132–37
- Stanton AL, Bower JE, Low CA. 2006. Posttraumatic growth after cancer. In *Handbook of Posttraumatic Growth: Research & Practice*, ed. LG Calhoun, RG Tedeschi, pp. 138–75. Mahwah, NJ: Lawrence Erlbaum
- Stanton AL, Rowland JH, Ganz PA. 2015. Life after diagnosis and treatment of cancer in adulthood: contributions from psychosocial oncology research. *Am. Psychol.* 70(2):159–74
- Stark JL, Avitsur R, Padgett DA, Campbell KA, Beck FM, Sheridan JF. 2001. Social stress induces glucocorticoid resistance in macrophages. *Am. J. Physiol. Regul. Integr. Comp. Physiol.* 280(6):R1799–805

- Stein KD, Syrjala KL, Andrykowski MA. 2008. Physical and psychological long-term and late effects of cancer. *Cancer* 112(S11):2577–92
- Tang M, Liu X, Wu Q, Shi Y. 2020. The effects of cognitive-behavioral stress management for breast cancer patients: a systematic review and meta-analysis of randomized controlled trials. *Cancer Nurs.* 43(3):222–37
- Tatrow K, Montgomery GH. 2006. Cognitive behavioral therapy techniques for distress and pain in breast cancer patients: a meta-analysis. *J. Behav. Med.* 29(1):17–27
- Taub CJ, Diaz A, Blomberg BB, Jutagir DR, Fisher HM, et al. 2022. Relationships between serum cortisol, RAGE-associated s100A8/A9 levels, and self-reported cancer-related distress in women with non-metastatic breast cancer. *Psychosom. Med.* 84:803–7
- Taub CJ, Lippman M, Hudson B, Blomberg BB, Diaz A, et al. 2019. Effects of randomized trial of brief forms of stress management on RAGE-associated s100A8/A9 in breast cancer patients undergoing primary treatment. *Cancer* 125(10):1717–25
- Tedeschi RG, Calhoun LG. 2004. Posttraumatic growth: conceptual foundations and empirical evidence. *Psychol. Inq.* 15(1):1–18
- Temel JS, Greer JA, Muzikansky A, Gallagher ER, Admane S, et al. 2010. Early palliative care for patients with metastatic non-small-cell lung cancer. *N. Engl. J. Med.* 363(8):733–42
- Thornton LM, Andersen BL, Carson WE. 2008. Immune, endocrine, and behavioral precursors to breast cancer recurrence: a case-control analysis. *Cancer Immunol. Immunother.* 57(10):1471–81
- Thornton LM, Andersen BL, Schuler T, Carson W. 2009. A psychological intervention reduces inflammatory markers by alleviating depressive symptoms: secondary analysis of a randomized controlled trial. *Psychosom. Med.* 71:715–24
- U.S. Census Bur. 2021. *Household pulse survey: measuring social and economic impacts during the coronavirus pandemic*. Surv., U.S. Census Bur., Washington, DC. <https://www.census.gov/programs-surveys/household-pulse-survey.html>
- Vargas S, Antoni MH, Carver CS, Lechner SC, Wohlgenuth W, et al. 2014. Sleep quality and fatigue after a stress management intervention for women with early-stage breast cancer in southern Florida. *Int. J. Behav. Med.* 21(6):971–81
- Wang AW-T, Bouchard LC, Gudenkauf LM, Jutagir DR, Fisher HM, et al. 2018. Differential psychological effects of cognitive behavioral stress management among breast cancer patients with high and low initial cancer-specific distress. *J. Psychosom. Res.* 113:52–57
- Wilbur J. 2015. Surveillance of the adult cancer survivor. *Am. Fam. Physician* 91(1):29–36
- Williamson EJ, Walker AJ, Bhaskaran K, Bacon S, Bates C, et al. 2020. Factors associated with COVID-19-related death using OpenSAFELY. *Nature* 584(7821):430–36
- Yanez B, McGinty HL, Mohr DC, Begale MJ, Dahn JR, et al. 2015. Feasibility, acceptability, and preliminary efficacy of a technology-assisted psychosocial intervention for racially diverse men with advanced prostate cancer. *Cancer* 121(24):4407–15



Contents

Surviving While Black: Systemic Racism and Psychological Resilience <i>James M. Jones</i>	1
Understanding the Need for Sleep to Improve Cognition <i>Ruth L.F. Leong and Michael W.L. Chee</i>	27
Rethinking Vision and Action <i>Ken Nakayama, Jeff Mober, and Joo-Hyun Song</i>	59
The Development of Color Perception and Cognition <i>John Maule, Alice E. Skelton, and Anna Franklin</i>	87
Understanding Human Object Vision: A Picture Is Worth a Thousand Representations <i>Stefania Bracci and Hans P. Op de Beeck</i>	113
Turning Attention Inside Out: How Working Memory Serves Behavior <i>Freek van Ede and Anna C. Nobre</i>	137
Determinants of Social Cognitive Aging: Predicting Resilience and Risk <i>Julie D. Henry, Sarah A. Grainger, and William von Hippel</i>	167
Self-Compassion: Theory, Method, Research, and Intervention <i>Kristin D. Neff</i>	193
Gender Inclusion and Fit in STEM <i>Toni Schmader</i>	219
Evaluative Conditioning: Past, Present, and Future <i>Tal Moran, Yabel Nudler, and Yoav Bar-Anan</i>	245
What Are Conspiracy Theories? A Definitional Approach to Their Correlates, Consequences, and Communication <i>Karen M. Douglas and Robbie M. Sutton</i>	271
Embracing Complexity: A Review of Negotiation Research <i>Erica J. Boothby, Gus Cooney, and Maurice E. Schweitzer</i>	299
Self-Continuity <i>Constantine Sedikides, Emily K. Hong, and Tim Wildschut</i>	333

A Socioecological-Genetic Framework of Culture and Personality: Their Roots, Trends, and Interplay <i>Jackson G. Lu, Verónica Benet-Martínez, and Laura Changlan Wang</i>	363
Psychology of Climate Change <i>Linda Steg</i>	391
Stress Management Interventions to Facilitate Psychological and Physiological Adaptation and Optimal Health Outcomes in Cancer Patients and Survivors <i>Michael H. Antoni, Patricia I. Moreno, and Frank J. Penedo</i>	423
Psychosocial and Integrative Oncology: Interventions Across the Disease Trajectory <i>Linda E. Carlson</i>	457
Emotion in Organizations: Theory and Research <i>Hillary Anger Elfenbein</i>	489
Pride: The Emotional Foundation of Social Rank Attainment <i>Jessica L. Tracy, Eric Mercadante, and Ian Hobm</i>	519
Psychological Resiliency: An Affect-Regulation Framework <i>Allison S. Troy, Emily C. Willroth, Amanda J. Shallcross, Nicole R. Giuliani, James J. Gross, and Iris B. Mauss</i>	547
Dealing with Careless Responding in Survey Data: Prevention, Identification, and Recommended Best Practices <i>M.K. Ward and Adam W. Meade</i>	577
The Psychology of Athletic Endeavor <i>Mark R. Beauchamp, Alan Kingstone, and Nikos Ntoumanis</i>	597

Indexes

Cumulative Index of Contributing Authors, Volumes 64–74	625
Cumulative Index of Article Titles, Volumes 64–74	630

Errata

An online log of corrections to *Annual Review of Psychology* articles may be found at
<http://www.annualreviews.org/errata/psych>

Related Articles

From the *Annual Review of Clinical Psychology*, Volume 18 (2022)

Temperamental and Theoretical Contributions to Clinical Psychology
Jerome Kagan

What Do We Know About the Genetic Architecture of Psychopathology?
Evan J. Giangrande, Ramona S. Weber, and Eric Turkheimer

Training the Next Generation of Clinical Psychological Scientists: A Data-Driven Call to Action
Dylan G. Gee, Kathryn A. DeYoung, Katie A. McLaughlin, Rachael M. Tillman, Deanna M. Barch, Erika E. Forbes, Robert F. Krueger, Timothy J. Strauman, Mariann R. Weierich, and Alexander J. Shackman

Measurement-Based and Data-Informed Psychological Therapy
Wolfgang Lutz, Brian Schwartz, and Jaime Delgado

Behavioral Interventions to Reduce Cardiovascular Risk Among People with Severe Mental Disorder
Amanda L. Baker, Erin Forbes, Sonja Pohlman, and Kristen McCarter

Real-Time Functional MRI in the Treatment of Mental Health Disorders
Vincent Taschereau-Dumouchel, Cody A. Cushing, and Hakwan Lau

The Genetic, Environmental, and Cultural Forces Influencing Youth Antisocial Behavior Are Tightly Intertwined
S. Alexandra Burt

The Invisibility of Power: A Cultural Ecology of Development in the Contemporary United States
Tasneem M. Mandivwala, Jennifer Hall, and Margaret Beale Spencer

Differences/Disorders of Sex Development: Medical Conditions at the Intersection of Sex and Gender
David E. Sandberg and Melissa Gardner

A Current Learning Theory Approach to the Etiology and Course of Anxiety and Related Disorders
Richard E. Zinbarg, Alexander L. Williams, and Susan Mineka

Dissociation and Dissociative Disorders Reconsidered: Beyond Sociocognitive and Trauma Models Toward a Transtheoretical Framework

Steven Jay Lynn, Craig Polizzi, Harald Merckelbach, Chui-De Chiu, Reed Maxwell, Dalena van Heugten, and Scott O. Lilienfeld

Psychosocial Treatments for Bipolar Disorder in Children and Adolescents

Haley M. Brickman and Mary A. Fristad

Major Depression and Its Recurrences: Life Course Matters

Scott M. Monroe and Kate L. Harkness

Suicide in African American Adolescents: Understanding Risk by Studying Resilience

W. LaVome Robinson, Christopher R. Whipple, Kate Keenan, Caleb E. Flack, and LaRicka Wingate

Psychopathy: Current Knowledge and Future Directions

Christopher J. Patrick

Cognitive Aging and the Promise of Physical Activity

Kirk I. Erickson, Shannon D. Donofry, Kelsey R. Sewell, Belinda M. Brown, and Chelsea M. Stillman

Neuroplasticity, the Prefrontal Cortex, and Psychopathology-Related Deviations in Cognitive Control

Monica Luciana and Paul F. Collins

The Biopsychosocial Puzzle of Painful Sex

Marta Meana and Yitzchak M. Binik

Mechanisms of Behavior Change in Substance Use Disorder With and Without Formal Treatment

Katie Witkiewitz, Rory A. Pfund, and Jalie A. Tucker

Police Violence and Public Health

Jordan E. DeVlyder, Deidre M. Anglin, Lisa Bowleg, Lisa Fedina, and Bruce G. Link

Allostasis, Action, and Affect in Depression: Insights from the Theory of Constructed Emotion

Clare Shaffer, Christiana Westlin, Karen S. Quigley, Susan Whitfield-Gabrieli, and Lisa Feldman Barrett

The Psychology of Pandemics

Steven Taylor

From the *Annual Review of Developmental Psychology*, Volume 4 (2022)

Becoming a Cognitive Scientist

Susan E. Carey

Drivers of Lexical Processing and Implications for Early Learning

Arielle Borovsky

Human Morality Is Based on an Early-Emerging Moral Core

Brandon M. Woo, Enda Tan, and J. Kiley Hamlin

- On the Origins of Mind: A Comparative Perspective
Kresimir Durdevic and Josep Call
- Sleep and Memory in Infancy and Childhood
Gina M. Mason and Rebecca M.C. Spencer
- Effects of Racism on Child Development: Advancing Antiracist Developmental Science
Iheoma U. Iruka, Nicole Gardner-Neblett, Nicole A. Telfer, Nneka Ibekwe-Okafor, Stephanie M. Curenton, Jacqueline Sims, Amber B. Sansbury, and Enrique W. Neblett
- Inequitable Experiences and Outcomes in Young Children: Addressing Racial and Social-Economic Disparities in Physical and Mental Health
Brenda Jones Harden and Natalie Slopen
- Ownership and Value in Childhood
Madison L. Pesowski, Shaylene E. Nancekivell, Arber Tasimi, and Ori Friedman
- Development of Religious Cognition
Rebekah A. Richert and Kathleen H. Corriveau
- Gender Development in Gender Diverse Children
Benjamin E. deMayo, Ashley E. Jordan, and Kristina R. Olson
- Development of Reward Circuitry During Adolescence: Depression, Social Context, and Considerations for Future Research on Disparities in Sexual and Gender Minority Youth
Kristen L. Eckstrand, Carly J. Lenniger, and Erika E. Forbes
- Spatial Navigation in Childhood and Aging
Merve Tansan, Kim V. Nguyen, and Nora S. Newcombe
- A Neurocognitive Model of Self-Concept Development in Adolescence
Eveline A. Crone, Kayla H. Green, Ilse H. van de Groep, and Renske van der Cruijssen
- The National Longitudinal Study of Adolescent to Adult Health (Add Health): An Underused Resource for Developmental Science
Kathleen Mullan Harris and Carolyn Tucker Halpern
- Beyond 'Use It or Lose It': The Impact of Engagement on Cognitive Aging
Elizabeth A.L. Stine-Morrow and Ilber E. Manavbasi
- Inhibition and Creativity in Aging: Does Distractibility Enhance Creativity?
Lixia Yang, Kesaan Kandasamy, and Lynn Hasler
- Open Science in Developmental Science
Lisa A. Gennetian, Michael C. Frank, and Catherine S. Tamis-LeMonda
- Practice and Policy Regarding Child Neglect: Lessons from Studies of Institutional Deprivation
Charles H. Zeanah and Lucy S. King

The Critical Roles of Early Development, Stress, and Environment in the Course of Psychosis

T.G. Vargas and V.A. Mittal

Use of Population-Level Administrative Data in Developmental Science

Barry J. Milne, Stephanie D'Souza, Signe Hald Andersen, and Leah S. Richmond-Rakerd

From the *Annual Review of Neuroscience*, Volume 45 (2022)

Multiple-Timescale Representations of Space: Linking Memory to Navigation

Wenbo Tang and Shantanu P. Jadhav

Challenges of Organoid Research

Madeline G. Andrews and Arnold R. Kriegstein

Receptor-Ribosome Coupling: A Link Between Extrinsic Signals and mRNA Translation in Neuronal Compartments

Max Koppers and Christine E. Holt

Brainstem Circuits for Locomotion

Roberto Leiras, Jared M. Cregg, and Ole Kiehn

Signaling Pathways in Neurovascular Development

Amir Rattner, Yanshu Wang, and Jeremy Nathans

Mesoaccumbal Dopamine Heterogeneity: What Do Dopamine Firing and Release Have to Do with It?

Johannes W. de Jong, Kurt M. Fraser, and Stephan Lammel

Melding Synthetic Molecules and Genetically Encoded Proteins to Forge New Tools for Neuroscience

Pratik Kumar and Luke D. Larvis

The Cerebellar Cortex

Court Hull and Wade G. Regehr

Clearing Your Mind: Mechanisms of Debris Clearance After Cell Death During Neural Development

Kendra E. Liu, Michael H. Raymond, Kodi S. Ravichandran, and Sarah Kucenas

Neural Signaling in Cancer

Michael B. Keough and Michelle Monje

Breathing Rhythm and Pattern and Their Influence on Emotion

Sufyan Ashbad, Kaiwen Kam, Christopher A. Del Negro, and Jack L. Feldman

Neural Algorithms and Circuits for Motor Planning

Hidehiko K. Inagaki, Susu Chen, Kayvon Daie, Arseny Finkelstein, Lorenzo Fontolan, Sandro Romani, and Karel Svoboda

Fluorescence Imaging of Neural Activity, Neurochemical Dynamics, and Drug-Specific Receptor Conformation with Genetically Encoded Sensors

Chunyang Dong, Yu Zheng, Kiran Long-Iyer, Emily C. Wright, Yulong Li, and Lin Tian

A Theoretical Framework for Human and Nonhuman Vocal Interaction

Gregg A. Castellucci, Frank H. Guenther, and Michael A. Long

Neuromodulation and Neurophysiology on the Timescale of Learning and Decision-Making

Cooper D. Grossman and Jeremiah Y. Cohen

Neuroimmune Interactions in Peripheral Organs

Roel G.J. Klein Wolterink, Glendon S. Wu, Isaac M. Chiu, and Henrique Veiga-Fernandes

Subcortical Cognition: The Fruit Below the Rind

Karolina Janacek, Tanya M. Evans, Mariann Kiss, Leela Shab, Hal Blumenfeld, and Michael T. Ullman

Considering Organismal Physiology in Laboratory Studies of Rodent Behavior

Patricia Rubio Arzola and Rebecca M. Shansky

Neuroscientific Evidence for Processing Without Awareness

Liad Mudrik and Leon Y. Deouell

Microglia and Neurodevelopmental Disorders

John R. Lukens and Ukpong B. Eyo

Adeno-Associated Virus Toolkit to Target Diverse Brain Cells

Rosemary C. Challis, Sripriya Ravindra Kumar, Xinhong Chen, David Goertsen, Gerard M. Coughlin, Acacia M. Hori, Miguel R. Chuapoco, Thomas S. Otis, Timothy F. Miles, and Viviana Gradinaru

Cross-Modal Plasticity in Brains Deprived of Visual Input Before Vision

Guillermina López-Bendito, Mar Aníbal-Martínez, and Francisco J. Martini

Functional Ultrasound Neuroimaging

Gabriel Montaldo, Alan Urban, and Emilie Macé

Human Cerebellar Development and Transcriptomics: Implications for Neurodevelopmental Disorders

Parthiv Haldipur, Kathleen J. Millen, and Kimberly A. Aldinger

Theory of the Multiregional Neocortex: Large-Scale Neural Dynamics and Distributed Cognition

Xiao-Jing Wang

Beyond Wrapping: Canonical and Noncanonical Functions of Schwann Cells

Carla Taveggia and M. Laura Feltri

Synaptic Mechanisms Regulating Mood State Transitions in Depression

Puja K. Parekh, Shane B. Johnson, and Conor Liston

From the *Annual Review of Organizational Psychology and Organizational Behavior*, Volume 9 (2022)

From Traditional Research to Responsible Research: The Necessity of Scientific Freedom and Scientific Responsibility for Better Societies

Anne S. Tsui

Recovery from Work: Advancing the Field Toward the Future

Sabine Sonnentag, Bonnie Hayden Cheng, and Stacey L. Parker

The Science of Leadership: A Theoretical Model and Research Agenda

Andrew M. Carton

Stigmatized Work and Stigmatized Workers

Glen Kreiner, Christine A. Mibelic, and Sven Mikolon

The Power of Listening at Work

Avraham N. Kluger and Guy Itzhakov

Compensation, Benefits, and Total Rewards: A Bird's-Eye (Re)View

Ingrid Smithbey Fulmer and Junting Li

Smart Heuristics for Individuals, Teams, and Organizations

Gerd Gigerenzer, Jochen Reb, and Shenghua Luan

When Gender Matters in Organizational Negotiations

Hannah Riley Bowles, Bobbi Thomason, and Inmaculada Macias-Alonso

New Developments in Social Network Analysis

Daniel J. Brass

Trust Within the Workplace: A Review of Two Waves of Research and a Glimpse of the Third

Kurt T. Dirks and Bart de Jong

Cross-Cultural Innovation and Entrepreneurship

Ute Stephan

Relational Dynamics of Leadership: Problems and Prospects

Terri A. Scandura and Jeremy D. Meuser

The Structure of Intrinsic Motivation

Ayelet Fishbach and Kaitlin Woolley

Revisiting Behavioral Integrity: Progress and New Directions After 20 Years

Tony Simons, Hannes Leroy, and Lisa Nishii

Informal (Field-Based) Learning

Scott I. Tannenbaum and Mikhail A. Wolfson

Assessing Interests in the Twenty-First-Century Workforce: Building on a Century of Interest Measurement

Christopher D. Nye

Accumulating Knowledge in the Organizational Sciences

Frank A. Bosco

From the *Annual Review of Public Health*, Volume 43 (2022)

Advances in Gender-Transformative Approaches to Health Promotion

Jane Fisher and Shelly Makleff

- Methods to Address Confounding and Other Biases in Meta-Analyses: Review and Recommendations
Maya B. Mathur and Tyler J. VanderWeele
- Qualitative Research Methods in Chronic Disease: Introduction and Opportunities to Promote Health Equity
Rachel C. Shelton, Morgan M. Philbin, and Shoba Ramanadhan
- Risks and Opportunities to Ensure Equity in the Application of Big Data Research in Public Health
Paul Wesson, Yulin Hswen, Gilmer Valdes, Kristefer Stojanovski, and Margaret A. Handley
- Social Epidemiology: Past, Present, and Future
Ana V. Diez Roux
- The Recent Rise of Suicide Mortality in the United States
Gonzalo Martínez-Alés, Tammy Jiang, Katherine M. Keyes, and Jaimie L. Gradus
- A Review of the Quality and Impact of Mobile Health Apps
Quinn Grundy
- Reimagining Rural: Shifting Paradigms About Health and Well-Being in the Rural United States
R.A. Afifi, E.A. Parker, G. Dino, D.M. Hall, and B. Ulin
- Scaling Up Public Health Interventions: Engaging Partners Across Multiple Levels
Jennifer Leeman, Alix Boisson, and Vivian Go
- Social Capital, Black Social Mobility, and Health Disparities
Keon L. Gilbert, Yusuf Ransome, Lorraine T. Dean, Jerell DeCaille, and Ichiro Kawachi
- Social Connection as a Public Health Issue: The Evidence and a Systemic Framework for Prioritizing the “Social” in Social Determinants of Health
Julianne Holt-Lunstad
- The Role of Citizen Science in Promoting Health Equity
Lisa G. Rosas, Patricia Rodriguez Espinosa, Felipe Montes Jimenez, and Abby C. King
- Understanding Health Inequalities Through the Lens of Social Epigenetics
Chantel L. Martin, Lea Gbastine, Evans K. Lodge, Radhika Dbingra, and Cavin K. Ward-Caviness
- Barriers and Enablers for Integrating Public Health Cobenefits in Urban Climate Policy
Maya Negev, Leonardo Zea-Reyes, Livio Caputo, Gudrun Weinmayr, Clive Potter, and Audrey de Nazelle
- Environmental Factors Influencing COVID-19 Incidence and Severity
Amanda K. Weaver, Jennifer R. Head, Carlos F. Gould, Elizabeth J. Carlton, and Justin V. Remais

Personal Interventions to Reduce Exposure to Outdoor Air Pollution

Robert J. Laumbach and Kevin R. Cromar

Transmission of Respiratory Viral Diseases to Health Care Workers: COVID-19 as an Example

Amanda M. Wilson, Darrab K. Sleeth, Camie Schaefer, and Rachael M. Jones

Designing for Dissemination and Sustainability to Promote Equitable Impacts on Health

Bethany M. Kwan, Ross C. Brownson, Russell E. Glasgow, Elaine H. Morrato, and Douglas A. Luke

Health-Related Quality of Life Measurement in Public Health

Robert M. Kaplan and Ron D. Hays

Public Health Roles in Addressing Commercial Determinants of Health

Kelley Lee and Nicholas Freudenberg

Real-Time Infectious Disease Modeling to Inform Emergency Public Health Decision Making

Anna Bershteyn, Hae-Young Kim, and R. Scott Braithwaite

Roles of Cities in Creating Healthful Food Systems

Nevin Cohen

Active Aging and Public Health: Evidence, Implications, and Opportunities

Shilpa Dogra, David W. Dunstan, Takemi Sugiyama, Afroditi Stathi, Paul A. Gardiner, and Neville Owen

Advancing Diabetes Prevention and Control in American Indians and Alaska Natives

Julie E. Lucero and Yvette Roubideaux

Eliminating Explicit and Implicit Biases in Health Care: Evidence and Research Needs

Monica B. Vela, Amarachi I. Erondu, Nichole A. Smith, Monica E. Peek, James N. Woodruff, and Marshall H. Chin

Health and Health Care Among Transgender Adults in the United States

Ayden I. Scheim, Kellan E. Baker, Arjee J. Restar, and Randall L. Sell

Mobile Health (mHealth) in Low- and Middle-Income Countries

Judith McCool, Rosie Dobson, Robyn Whittaker, and Cbris Paton

Shifting the Demand for Vaccines: A Review of Strategies

Neeraj Sood, Tahmina Nasserie, Sushant Joshi, and Eran Bendavid

The Indian Health Service and American Indian/Alaska Native Health Outcomes

Gina Kruse, Victor A. Lopez-Carmen, Anpotowin Jensen, Lakotah Hardie, and Thomas D. Sequist

From the *Annual Review of Vision Science*, Volume 8 (2022)

The Boston Keratoprosthesis—The First 50 Years: Some Reminiscences

Claes Doblman

- The Essential Role of the Choriocapillaris in Vision: Novel Insights from Imaging and Molecular Biology
Kelly Mulfaul, Jonathan F. Russell, Andrew P. Voigt, Edwin M. Stone, Budd A. Tucker, and Robert F. Mullins
- Calcium Channels in Retinal Function and Disease
Brittany Williams, J. Wesley Maddox, and Amy Lee
- Cellular and Molecular Determinants of Retinal Cell Fate
Eleni Petridou and Leanne Godinbo
- Do You See What I See? Diversity in Human Color Perception
Jenny M. Bosten
- Feature Detection by Retinal Ganglion Cells
Daniel Kerschensteiner
- Retinal Encoding of Natural Scenes
Dimokratis Karamanlis, Helene Marianne Schreyer, and Tim Gollisch
- Vision Impairment and On-Road Driving
Joanne M. Wood
- Patient-Reported Measures of the Effects of Vision Impairments and Low Vision Rehabilitation on Functioning in Daily Life
Robert W. Massof
- Sensory Perception in Autism: What Can We Learn?
Bat-Sheva Hadad and Amit Yashar
- Statistical Learning in Vision
József Fiser and Gábor Lengyel
- Critical Periods in Vision Revisited
Donald E. Mitchell and Daphne Maurer
- Recent Treatment Advances in Amblyopia
Kimberly Meier and Kristina Tarczy-Hornoch
- Binocular Integration in the Primate Primary Visual Cortex
A. Maier, M.A. Cox, J.A. Westerberg, and K. Dougherty
- Spike-Gamma Phase Relationship in the Visual Cortex
Supratim Ray
- More Than the Face: Representations of Bodies in the Inferior Temporal Cortex
Rufin Vogels
- Visual Attention in the Prefrontal Cortex
Julio Martinez-Trujillo
- Eye Movements as a Window into Decision-Making
Miriam Spering